



*Delivering Sustainable Urban and Environmental Solutions  
through Local Expertise and Global Partnerships*

## PROFILE of COMMITMENT CONSULTANTS (CC)

### BUSINESS AREAS

- Solid Waste Management and Circular Economy
- Urban Infrastructure Development
- Environment and Climate Change
- Waste Recycling and Renewable Energy
- Water, Sanitation and Hygiene (WASH)
- Disaster Risk Management and Emergency Response
- Livelihoods, Gender and Social Inclusion
- Tourism and Cultural Heritage
- Energy and Power Sector Development

### SERVICES

- Project Preparatory Technical Assistance (PPTA)
- Project Management Consultancy (PMC)
- Project Management, Design and Supervision Consultancy (PMDSC)
- Monitoring and Evaluation (M&E)
- Feasibility and Pre-feasibility Studies
- Capacity Building and Training
- Strategic Planning and Policy Advisory
- Results Measurement and Impact Assessments
- Institutional and Financial Analysis



### Address:

40/7E, 40/7H Johuri Moholla,  
Level -5, Mohammadpur,  
Dhaka-1207  
Bangladesh.

## COMMITMENT CONSULTANTS

### Executive Summary

**Commitment Consultants (CC)** is a multidisciplinary consulting firm established in **2007** and headquartered in **Dhaka, Bangladesh**, with additional operational presence in **Khulna** and **Canada**. The firm provides high-quality advisory and technical services across a range of development sectors, with strong specialization in **solid waste management (SWM)**, **circular economy**, **environment and climate change**, **water, sanitation and hygiene (WASH)**, and **urban infrastructure development**.

With more than **17 years of professional experience**, CC has successfully supported government agencies, development partners, and international organizations in delivering sustainable and impactful projects. The firm has collaborated with prominent institutions such as the **World Bank**, **Asian Development Bank (ADB)**, **Japan International Cooperation Agency (JICA)**, **UNICEF**, and the **Royal Academy of Engineering (UK)**, demonstrating its ability to operate effectively in complex, donor-funded environments.

CC offers a comprehensive suite of services, including **project preparatory technical assistance**, **feasibility and pre-feasibility studies**, **project management and supervision**, **capacity building**, **monitoring and evaluation**, and **strategic planning**. By combining strong local knowledge with international best practices, CC delivers **investment-ready and implementation-focused solutions** tailored to the needs of its clients.

The organization is led by its Founder and Chief Executive Officer, **Mr. Monir Alam Chowdhury**, and supported by a team of senior technical experts with extensive national and international experience. Through long-standing partnerships with government ministries, city corporations, municipalities, and international agencies, CC has established itself as a **trusted local partner** for sustainable urban and environmental development in Bangladesh and the wider South Asian region. The firm is committed to delivering **innovative, inclusive, and climate-resilient solutions** that contribute to improved urban services and environmental sustainability.

---

### Key Strengths

- Over 17 years of multidisciplinary consulting experience
- Proven track record with World Bank, ADB, JICA, and UN agencies
- Strong nationwide field presence and rapid mobilization capacity
- Extensive network of national and international experts
- Demonstrated success in international consortium projects
- Expertise in SWM, WASH, climate resilience, and urban infrastructure

---

### Organizational Structure and Management

Commitment Consultants employs a dedicated team of skilled core staff and maintains a broad network of national and international experts across engineering, environmental management, social development, and institutional strengthening. This multidisciplinary approach enables CC to mobilize qualified professionals and deliver high-quality consultancy services for complex assignments.

The firm operates six days a week (Saturday to Thursday) to ensure effective project management and client responsiveness. Regular staff meetings are held to monitor progress, ensure accountability, and address operational challenges. Staff members are empowered with appropriate delegation of authority while maintaining rigorous quality assurance standards.

## Leadership

### Mr. Monir Alam Chowdhury

*Founder and Chief Executive Officer (CEO)*

Mr. Chowdhury holds a Master of Social Science (MSS) in Sociology from the University of Dhaka and brings over **30 years of professional experience** in development consulting. He has worked extensively with government agencies, international development partners, and non-governmental organizations. His leadership has been instrumental in positioning CC as a reputable consulting firm in Bangladesh.

He has served as:

- Founder President, **Khulna Solid Waste Management Forum**
- Executive Committee Member, **Bangladesh Waste Management Foundation (BWMF)**
- Advisory Committee Member, **Bangladesh Biogas Development Foundation (BBDF)**

Mr. Chowdhury has contributed to numerous projects funded by the **World Bank, ADB, JICA** and other international organizations as a consultant, country representative, national expert, and team leader. He also served as **Project Coordinator** for two long-term projects funded by the **World Bank** and **UNDP**.

### Dr. Shafiul Azam Ahmed

*Director and Founder Partner*

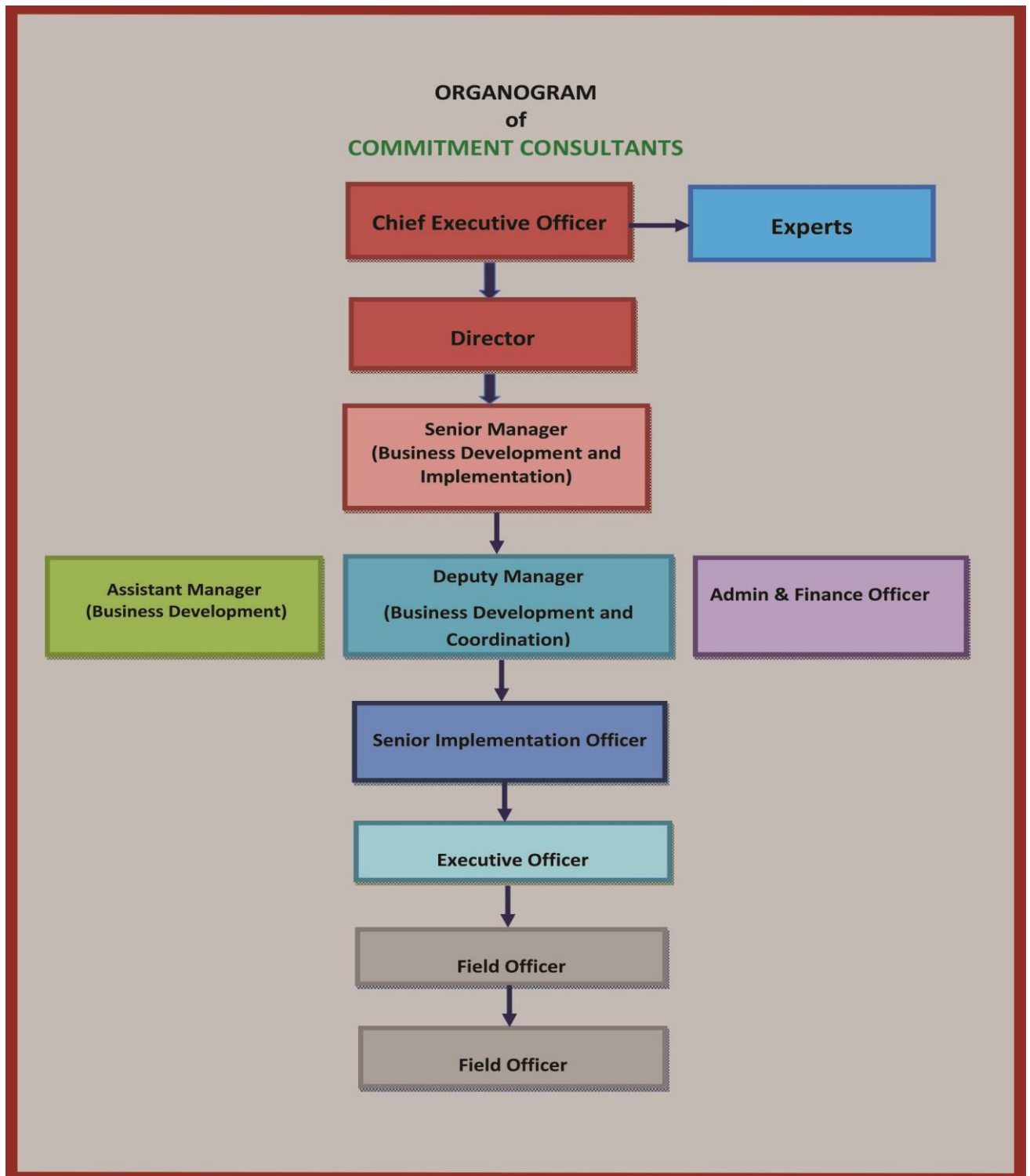
Dr. Shafiul Azam Ahmed, Director and Founder Partner, is a former Water and Sanitation Specialist at the World Bank and brings over 25 years of international experience. Dr. Ahmed completed his undergraduate, master's, and PhD degrees from reputed universities in the **USA and the UK**. He has served as a **Water and Sanitation Specialist** with the World Bank and has worked with **ICDDR,B**. He has led numerous government and donor-funded projects as both an international and national expert and team leader, contributing significant technical and strategic expertise to CC.

## Expert Network and Operational Presence

CC is further strengthened by an extensive pool of multidisciplinary experts who support the implementation of assignments across various sectors. The firm maintains effective coordination and communication with its experts, enabling rapid mobilization of specialized skills tailored to project requirements.

Commitment Consultants operates from its **head office in Dhaka**, with a **regional office in Khulna** and an **international presence in Canada**, managed by the Director. This geographic footprint enhances the firm's capacity to collaborate with both national and international partners.

### Organogram of Commitment Consultants



**Details of the Consultancy Firm (CC)**

1.	Name of the Firm	Commitment Consultants
2.	Firm status	Partnership
3.	Established	2007
4.	Business Type	Consultancy & Field based Research
5.	Principal office	40/7E, 40/7H Johuri Moholla, Level-05, Mohammadpur, Dhaka-1207 Bangladesh.
6.	Canada office	11, Green downs Drive Toronto, ON M1M 357 Canada
7.	Khulna office	15A, Belashi building, Islampur Road Khulna, Bangladesh
8.	Email address	Info.commitmentconsultants@gmail.com
9.	Web address	<a href="http://www.commitmentconsultants.com">www.commitmentconsultants.com</a>
10	Contact Person	Monir Alam Chowdhury Chief Executive Officer (CEO) Commitment Consultants Cell Phone: +8801714082977 Email: monir.commitmentconsultants@gmail.com
11	Director	Dr. Shafiul Azam Ahmed Partner & Director Commitment Consultants

**Registration Entity of CC**

Sl. No	Registration Entity	Authority	Year
1.	Trade License	Dhaka City Corporation	2007
2.	Certificate of Incorporation	Registered with Joint Stock Company, Government of the People's Republic of Bangladesh	2008
3.	ADB (Asian Development Bank) Registration	CMS Registered No: 017162	2008

## Technical Capacity of CC

**CC has developed its expertise in the following development areas:**

Areas of Development		
Community Waste Management	Environment and Climate Change	Disaster Management and Emergency Response
Recycling and EPR	WASH	Urban Development
Infrastructure Development in Waste management	Livelihoods	Women & Gender
Renewable Energy	Power Sector	Tourism/Archeology

**Consultancy services provided by CC as follows:**

Sl. No.	Services
1.	Project Management, Design and Supervision Consultancy
2.	Program Support Consultancy
3.	Technical Assistance
4.	Communication And Coordination with LGIs
5.	Planning And Design
6.	Media And Communication Strategy
7.	Performance Evaluation
8.	Strategic Planning
9.	Action Research
10.	Feasibility Study
11.	Situation Analysis
12.	Survey/Study
13.	Capacity Building and Training
14.	IT And Science Lab Development

## Working relation and networking with National and International organization

### **Commitment Consultants has developed working relation and networking with the following government and private organizations:**

- Ministry of Local Government Rural Development and Cooperatives (MoLGRD&C);
- Ministry of Health and Family Welfare (MoHFW);
- Department of Archaeology (DOA);
- Bangladesh Parjatan Corporation (BPC);
- World Bank;
- Asian Development Bank (ADB);
- Dhaka South City Corporation;
- Dhaka North City Corporation;
- Narayangonj City Corporation;
- Chattagram City Corporation;
- Rajshahi City Corporation;
- Khulna City Corporation;
- Sylhet City Corporation;
- Barisal City Corporation;
- Rangpur City Corporation;
- Satkhira Municipality;
- Borguna Municipality
- Gaibandha Municipality;
- Pure Earth;
- JICA;
- UNICEF;
- BRAC;
- Oxfam BD;
- International Rescue Committee (IRC)
- Solidarity International;
- Practical Action Bangladesh;
- Caritas Bangladesh;
- CCDB;
- ECHO/IMPACT;
- E-Gen Consultants Ltd;
- Bangladesh Bio-gas Development Foundation;
- Bangladesh Plastic Goods Manufacturers and Exporters Association (BPGMEA);

### **Commitment Consultants has developed working relation and networking with the following international organizations:**

- IMC Worldwide, UK;
- KEITI, Korea;
- KECC/HamSolz, Korea;
- WSUP, UK;
- IPE Global, India;
- Max Foundation, Netherlands;
- Seureka, France;
- Pure Earth, USA;
- Royal Academy of Engineering, UK;
- Lloyd's Register Foundation, UK;
- Engineering X;
- Sycom Projects Consultants PVT. Ltd, India

## Partnership and Working Relation with National organization /International Agencies

**Japan International Cooperation Agency (JICA):** Commitment Consultants (CC) has done some Capacity Development work with JICA-DCC project. It has developed the training module and manual for Primary Collection Service Provider (PCSP) and Community Unit Working Group (CUWG). CC also conducted an assignment of JICA, titled “Biogas Generation and Demand Survey in Bangladesh”.

**Water and Sanitation for Urban Poor (WSUP):** CC did a Strategic Sanitation Plan for Mirpur. It was accomplished jointly with WSUP.

**International Training Network (ITN), BUET:** CC conducted a wide range of study on “Waste Picker’s Livelihoods, vulnerabilities and means to overcome existing condition”. CC worked jointly with ITN BUET in this study and assessed about 500 waste pickers of Dhaka City.

**IPE Global, India:** It is an India based organization. CC is implementing a project jointly with IPE and CC of the South Asia Tourism Infrastructure Development Project (SATIDP) - Bangladesh Portion, under Department of Archaeology, Ministry of Cultural Affairs, GOB. It is also implementing another project with IPE of Urban Public and Environmental Health Sector Development Project under Local Government Division, GOB.



CC has also performed various assignments with the following organizations in different stages:



➤ Local Government Division, MOLGRD&C, GOB



➤ Archaeology department, Ministry of cultural affairs, GOB



➤ Max Foundation, Netherlands



➤ Bangladesh Plastic Goods Manufacturers & Exporters Association (BPGMEA)



➤ Danish Refugee Council, Denmark.



➤ CAFOD



swisscontact

➤ Swiss Contact



➤ Caritas Bangladesh



➤ Plan International Bangladesh



➤ Practical Action Bangladesh



➤ Action Aid Bangladesh



➤ Concern worldwide



➤ Asra Foundation, UK



➤ ECHO/IMPACT, Bangladesh

### Few Core Panel Team Experts of Commitment Consultants

Sl. no	Name	Professional Background	Position	Expertise
1.	<b>Shafiul Azam Ahmed</b> PhD in Engineering	<ul style="list-style-type: none"> <li>Former water and sanitation specialist of World Bank, Bangladesh</li> <li>A reputed international consultant</li> </ul>	Director, Commitment Consultants	Project Development, Water and sanitation, SWM.
2.	<b>Mr. Abul Khair</b> B. Sc. Engineering (Civil), BUET, Dhaka, Bangladesh	Executive Engineer, PWD	Consultant	Civil and Structural Specialist (Engineer)
3.	<b>Professor Dr. Shahnaj Husne Jahan</b> Ph.D. in Archaeology, Deccan College Post-graduate and Research Institute, Pune, India	Professor Department of General Education Director Center for Archaeological Studies University of Liberal Arts Bangladesh	Consultant	Cultural Heritage Management and Tourism Specialist
4.	<b>Umme Farwa Daisy</b> Post Graduate in Psychology, Rajshahi University	Worked with a number of GoB, World Bank and NGO	Consultant	Community Development and PRA/CLTS Training Specialist
5.	<b>Julia Ahmed</b>	Worked as consultants/Experts for last 25 years	Consultant	Women, Gender, etc.
6.	<b>Shams Uddin Md. Rafi</b> MSS	Worked with number of national and international organizations	Consultant	Capacity Building, Training, etc.
7.	<b>Sheikh Maruf Hossain</b> M. Arc	Assistant Professor Architecture discipline, Khulna University	Consultant	Architecture, Planning, Designing, etc.
8.	<b>Mohammad Abu Hamid</b> Engineering in Electronics and Communication from Karnataka University, India	Worked in many IT related Project	Consultant	Mobile App Development/IT Specialist
9.	<b>Waled mahmud</b> MDS, M.Com, PG Dip. Mgt. Consultancy	Working in an international research organization as GM. Worked as a consultant in many international and national organization, focusing on WATSAN, SWM, urban development, etc	Consultant	Project Development, Research, Water and sanitation, WM and sanitation.

10.	<b>Dr. Julia Ahmed</b> MBBS, MPH	Executive Director, Nova Consultancy	Consultant	SRHR, GAD, etc.
11.	<b>Dr. Tariq Bin Yousuf</b> M.Sc in Engineering, BUET, PhD in WM from Loughborough University, UK	Addl. Chief Engineer (Retd), DNCC	Consultant	Waste management, Sanitation, Climate Change, urban development, etc.
12.	<b>Abdul Latif Khan</b> M.A	A reputed national and international expert on Disaster management	Consultant	Disaster Risk Reduction, climate change, Disaster management, etc.
13.	<b>Selina Ahmed</b> M.A	A reputed national and international expert Gender	Consultant	Gender, women's empowerment, Child protection, Sexual Reproductive Health Rights, Gender Based Violence, etc
14.	<b>Dr. Md. Rezaul Karim</b>	Professor (Department of Civil and Environmental Engineering) Islamic University of Technology (IUT)	Consultant	Solid Waste Management, Waste management, Sanitation, WASH, etc
15.	<b>Abu Tareq Muhammad Salahuddin</b> Communication Skill" by the British Council, MBBS	A reputed national and international expert on Communication	Consultant	Communication
16.	<b>A K M Rezaul Haque Khan</b> M.A	A reputed national and international expert on Environment Assessment	Consultant	ESMP, Environment, Climate change, etc
17.	<b>Md. Ahmedur Rahman Talukder</b> B. Sc. Engineering	A reputed national and international expert on IT and Science	Consultant	IT and Science trainer
18.	<b>Mahbub Ul Huda</b> M.A	A reputed national and international expert on Science Lab trainer	Consultant	Science Lab trainer
19.	<b>Muhammad Humayun Kabir</b> PhD in GIS and agriculture MSc in Agricultural Extension	Reputed National and International Expert in Technology Adoption, Climate-Smart Agriculture, Climate Change Adaptation, Food Security, and Impact Analysis	Consultant	Technology adoption, Climate smart agriculture, Climate change adaptation, Food security, Impact analysis
20.	<b>Dr Md. Zakir Hossain</b> PhD in Urban Studies, Master of Governance and Development, Bachelor of Urban and Rural Planning	Professor, URP, Khulna University, National and International Expert in City Master Plan Projects, with Notable Contributions to the Asian Disaster Preparedness Centre, the Urban Development Directorate (UDD), and Urban Sustainable Development.	Consultant	Urban Development Directorate (UDD), and Urban Sustainable Development. Expertise Encompasses Sustainability, Social and Economic Development, and 'Climate Change and Cities

Details of the projects of Commitment Consultants (CC)

Project Data Sheets (PDS)  
of  
Commitment Consultants

**Project Experience (Flagship Projects)**

**Project 1**

<b>Name of the Project: Comprehensive Training Program on Plastic Waste Reduction and Single Use Plastic (SUP) Alternatives, and SUP Value Chain Study, Including Dissemination Workshops and Report Publication- Bangladesh</b>	
<b>Country:</b> Bangladesh  <b>Name of the Assignment:</b> Comprehensive Training Program on Plastic Waste Reduction and Single Use Plastic (SUP) Alternatives, and SUP Value Chain Study, Including Dissemination Workshops and Report Publication- Bangladesh  <b>Funded by:</b> South Asia Co-operative Environment Programme (SACEP)	<b>Duration of assignment: 14 Months</b> <b>Status:</b> Ongoing
<b>Name of Client:</b> South Asia Co-operative Environment Programme (SACEP)	<b>Professional Experts/Staff provided by Your Organization:</b> No. of Expert: 3
<b>Start Date (Month/Year):</b> Mar 2025 – April 2025	<b>Completion Date: (Month/Year):</b> 2026
<b>Aim of the project</b> <ul style="list-style-type: none"> <li>To <b>significantly reduce plastic waste</b> generation in Bangladesh, particularly from single-use plastics (SUP).</li> <li>To <b>promote and facilitate the adoption of sustainable alternatives</b> to SUP across sectors.</li> <li>To <b>enhance awareness and build capacity</b> of key stakeholders (e.g., government officials, informal sector, community members) on effective plastic waste management.</li> <li>To <b>design and implement a targeted training program</b> focused on the environmental impacts of plastic waste and practical solutions.</li> <li>To <b>analyze the value chain of SUP</b>, identifying gaps, intervention points, and opportunities for improving recycling and waste reduction.</li> <li>To <b>engage stakeholders through consultations and workshops</b> for collaborative solution-building and knowledge sharing.</li> <li>To <b>develop evidence-based recommendations</b> for policies and strategies that support circular economy and sustainable waste governance.</li> <li>To <b>support the Government of Bangladesh</b> in meeting national and international environmental commitments related to plastic pollution and sustainable development.</li> </ul>	
<b>Detail Description of Actual Services will be provided by CC’s Experts and Staff:</b> <b>1. Project Planning and Coordination</b> Develop a detailed work plan, implementation strategy, and timeline in coordination with the client and key stakeholders. Ensure alignment with national priorities, existing policies (e.g., National Plastic Action Plan), and stakeholder expectations. Coordinate with relevant government bodies, NGOs, private sector actors, and community representatives for smooth project execution.	

**2. Capacity Building and Training Program Implementation**

**Needs Assessment:** Design and execute a stakeholder-specific needs assessment to identify knowledge gaps, practices, and capacity-building requirements on plastic use and waste.

**Curriculum Development:** Create a modular, interactive training curriculum addressing plastic waste impacts, SUP alternatives, waste management practices, and behavioral change techniques.

**Training Delivery:** Facilitate and deliver high-quality training programs using participatory and inclusive methods, both in-person and online, targeting various audiences including government officials, municipal staff, informal waste workers, and community leaders.

**Evaluation and Reporting:** Measure training effectiveness through pre- and post-training assessments, compile training feedback, and generate final training reports with recommendations for further improvements.

**3. SUP Value Chain Study**

**Pre-feasibility Analysis:** Conduct a technical, economic, and environmental assessment of integrated solid waste management solutions, including landfill rehabilitation and waste-to-energy options.

**Value Chain Mapping and Analysis:** Analyze the full lifecycle of SUP products in the Dhaka South City context—covering production, distribution, consumption, and disposal. Identify key actors, flow of materials, leakage points, and recycling opportunities.

**Policy and Market Review:** Examine existing policies, market conditions, and informal sector dynamics to understand enabling and hindering factors for SUP reduction and sustainable waste management.

**4. Stakeholder Engagement and Advocacy**

**Consultations and Workshops:** Organize and facilitate stakeholder workshops, roundtable discussions, and consultation meetings with government agencies, private sector, NGOs, and waste workers to share findings and co-develop solutions.

**Capacity Strengthening for Policymakers and Enforcers:** Provide strategic advice and knowledge transfer to support evidence-based policymaking and enforcement capacity.

**5. Knowledge Management and Dissemination**

**Development of Knowledge Products:** Prepare technical reports, policy briefs, training manuals, and IEC materials to support broader outreach and education efforts.

**Dissemination Workshop:** Plan and conduct a final dissemination event to present study findings, training outcomes, and policy recommendations to a wider audience, including government, development partners, and civil society.

**Final Reporting:** Deliver comprehensive project documentation, including lessons learned, challenges, success stories, and strategic recommendations for scale-up.

**Project 2**

**Name of the Project: Safer End Engineering Life (SEEL) - Champions Stage 2 22/23**

**Country:** Bangladesh

**Name of the Assignment:**

Promoting better environment, health and Social Protection in the small-scale plastic recycling industry in Bangladesh.

**Funded by:** Royal Academy of Engineers (RAE), UK

Location: Dhaka and Chattogram city corporation areas, Bangladesh

**Duration of assignment:**

**Status:** Completed

**Name of Client:** Royal Academy of Engineers (RAE), Engineering X, UK

**Professional Experts/Staff provided by Your Organization:**

No. of Expert: 3, No of mid-level staff: 2, No. Of field level staffs: 4

<b>Start Date (Month/Year) : Nov 2022 - Oct 2024</b>	<b>Completion Date (Month/Year): 2024</b>
<p><b>Aim of the project</b> To promote better environmental, health, and social protection in the small-scale plastic recycling industry in Bangladesh.</p> <p><b>Specific objectives of the project</b> The specific objectives of the project were as mentioned below:</p> <ul style="list-style-type: none"> <li>• To provide a livelihood to workers, stimulate local economic activity, and prevent plastic pollution</li> <li>• To control of noxious gases, water, and soil pollution, which has a link with environmental issues</li> <li>• To protect the workers who are in danger of air pollution, such as by producing toy letter blocks that are unsafe for them as well as for the children, it has negative impacts on their health.</li> <li>• To ensure the safety and hygiene of women workers, gender bias in salary, and child labor in waste-picking, it provides negative impacts on social issues.</li> </ul>	
<p><b>Detail Description of Actual Services will be provided by CC's Experts and Staff:</b> The main activities in the project included;</p> <ul style="list-style-type: none"> <li>• Recruit a team of experienced experts and well-trained staffs</li> <li>• List the plastic recycling factories in Dhaka and Chattogram</li> <li>• Selection factories for conducting survey</li> <li>• Conducted survey, FGD and KII and analysis</li> <li>• Workshop jointly with BPGMEA, where the participants were the owners and staffs of small scale plastic recycling factories</li> <li>• Provided training to the factory workers and field staffs</li> <li>• Discussion event with BPGMEA and recycling factory owners</li> <li>• Identifies scope of supporting recycling factories</li> <li>• Signed MOU and provided few health and safety items support to number of small scale plastic recycling factories.</li> <li>• Developed banner, festoons, wall poster, etc and provided awareness materials to few factories</li> <li>• Attended ISWA conference at Oman</li> </ul>	

**Project 3**

<b>Name of the Project: Pre-Feasibility Study: Support for Establishing of Circular Economy through Integrated Solid Waste Management in the Coastal Region of Bangladesh</b>	
<p><b>Country:</b> Bangladesh <b>Name of the Assignment:</b> Pre-Feasibility Study: Support for Establishing of Circular Economy through Integrated Solid Waste Management in the Coastal Region of Bangladesh</p> <p>Funded by: Korea Ministry of Environment (KMOE)</p> <p><b>Location: Chattogram, Bangladesh</b></p>	<p><b>Duration of assignment:</b> <b>Status:</b> Completed</p>
<b>Name of Client: Chattogram City Corporation &amp; KEITI, KECC and HamSolz</b>	<b>Professional Experts/Staff provided by Your Organization:</b> No. of Expert: 4, No of person-Months: 12
<b>Start Date (Month/Year) :2022</b>	<b>Completion Date(Month/Year): 2023</b>
<p><b>Objectives of the Project:</b></p> <ul style="list-style-type: none"> <li>• Documents review and Data Collection from the field.</li> <li>• Site Visit (CCC area and surroundings) for observing the activities, facilities and all other details about SWM.</li> <li>• Conduct the necessary FGDs, KII and IDIs.</li> </ul>	

- Industrial site visits to observe the SWM situation
- 02 Landfill visit and assessment (Waste disposal pattern, waste generation quantity, transport, facilities, manpower, environmental impact, etc.)
- Waste composition/characterization survey and analysis (Separate waste analysis for 02 blocks of CCC based on 02 landfill sites. It will be conducted in 03 income level areas)
- Chemical test of wastewater/leachate (will be tested in the lab)
- Assessment of City's waste management system
- Site Visit/gather information of 09 surroundings municipalities of CCC about SWM activities, facilities, interlink of transportation/distance, etc.

**Detail Description of Actual Services will be provided by CC's Experts and Staff:**

The main activities in the project included;

**City Visit, observation and reconnaissance**

- Primary waste collection by CCC
- Primary collection at HH level by PCSP (private collection service providers)
- Operation and activities at STS (secondary transfer station) and capacity of STS to store and carry out the waste transfer operation
- City markets (grocery and vegetable)
- Any informal/poorly managed secondary waste management facility
- Recycling initiatives, waste pickers activities, waste traders, circular economy, etc.
- Final disposal/Landfill sites

**Waste generation, collection and disposal survey**

- waste generation at the HH level
- Waste storage practice
- Waste collection system and disposal
- Amount of waste per non-motorize tri-cycle van

**Waste composition survey, laboratory test and analysis**

City waste was taken at the landfill sites from the tri-cycle vans, filled with collected waste. Then it was segregated and analyze. It has also collected waste water/leachate from landfill site, preserve it properly and gave it to the lab for chemical test

**Project 4**

<b>Name of the Project: Baseline Assessment for Plastic Debris flowing into Rivers and Seas of South Asia, 2020-21</b>	
<p><b>Country:</b> Bangladesh  <b>Name of the Assignment:</b> Baseline Assessment for Plastic Debris flowing into Rivers and Seas of South Asia, 2020-21                   Funded by: World Bank   <b>Location:</b> Various points of Bangladesh</p>	<p><b>Duration of assignment:</b>  <b>Status:</b> Completed</p>
<p><b>Name of Client:</b> World Bank   <b>Name of the lead Firm:</b> IMC Worldwide, UK</p>	<p><b>Professional Experts/Staff provided by Your Organization:</b>                  No. of Expert: 2, No of person-Months: 6</p>
<p><b>Start Date (Month/Year) :</b> Oct, 2020</p>	<p><b>Completion Date (Month/Year):</b> March, 2021</p>
<p><b>Objectives of the Project:</b></p> <ul style="list-style-type: none"> <li>• Inception: Literature review, remote participate in regional workshop, inception report, etc.</li> <li>• Material flow analysis for waste plastics: Define main plastic supply chains and waste pathways,</li> </ul>	

- collect data (secondary sources) for a material flow analysis of plastic waste, etc Regulatory and policy and programs stocktaking and gap analysis to plastics production and
- recycling: Assess viability of solutions to reduce plastic waste problem, progress on EPR Stakeholder and socio-economic analysis
- Hotspots assessment for marine plastic debris
- Consolidation: Second remote workshop, contribute to Final (Regional) report

**Detail Description of Actual Services will be provided by CC’s Experts and Staff:**

The main activities in the project included;

- Engage with international team to finalize details of methodology and work plan
- Material flow analysis for waste plastics
- Define main plastic supply chains and waste pathways and understand the methodology
- Regulatory and policy and programs stocktaking and gap analysis
- Assess viability of solutions to reduce plastic waste problem
- Stakeholder and socio-economic analysis
- Stakeholder mapping and socio-economic analysis for each country
- Hotspots assessment for marine plastic debris
- Consolidation of Second remote workshop (Remote participation)
- Contribute to Final (Regional) report.

**Project 5**

**Name of the Project: Feasibility Study and drafting of a Project Commitment Note (NEP) under Capacity building to reduce lead contamination in Bangladesh project**

**Country:** Bangladesh

**Name of the Assignment:**

Funded by: The French Global Environment Fund (FFEM)

**Location:** Bangladesh

**Duration of assignment:**

**Status:** Completed

**Name of Client:**

**Professional Experts/Staff provided by Your Organization:**

No. of Expert: 2, No of person-Months: 3

**Start Date (Month/Year):** Dec, 2021

**Completion Date (Month/Year):** March, 2022

**Objectives of the Project:**

- Pay particular attention, among other things, to the elements that gave rise to comments from the Scientific and Technical Committee, the Secretariat and the FFEM Steering Committee during the project identification phase; A detailed, realistic provisional schedule for the duration of the project
- A proposal for a Project monitors and evaluation system, based on solid, clearly predefined indicators, specifying its articulation with other existing monitoring and evaluation systems. In addition, in order to prepare the drafting of the NEP, the Consultant will have to deal with the following points:
- Revise and deepen the logical framework of the entire project and define precisely the project monitoring indicators;

**Detail Description of Actual Services will be provided by CC’s Experts and Staff:**

The main activities in the project included;

- Define the critical assumptions for the success of the project and the conditions for its sustainability and scaling up;
- Evaluate the main risks of the project and explain how the project will be adapted to take into account and or better manage these risks:
- Propose a categorization of the project according to the Environmental and Social analysis grid and the methodological description provided in the appendix (categorization by criterion identifying the risks or uncertainties, then attribution of an overall categorization to the project)
- Update and specify the amount of the various financial contributions announced, their points of application and their respective timetables, with a view to coordination and harmonization between partners.

**Project 6**

<b>Name of the Project: ADB TA No. 7597- Nepal: Capacity Building for Waste Management</b>	
<b>Country:</b> Nepal <b>Assignment Location:</b> Nepal Name of the assignment: Capacity Building of Waste Management Council (SWMC) and Solid Waste Management Technical Support Center (SWMTSC) of Nepal	<b>Duration of assignment:</b> 07(Seven) months <b>Status:</b> Completed
<b>Name of Client:</b> Asian Development Bank (ADB)	<b>Professional Experts/Staff provided by Your Organization:</b> No of Expert: 01 No of Staff: 0 No of person-Months: 7
<b>Start Date (Month/Year):</b> June, 2011	<b>Completion Date (Month/Year):</b> December, 2011
<b>Name of the Lead Consultant Firm, if any:</b> IPE Global (P) Ltd. India and Commitment Consultants	
<b>Position of the senior professional experts of your firm performed in the project:</b> Team Leader	
<b>Objectives of the Project:</b>  Capacity Building of Waste Management Council (SWMC) and Solid Waste Management Technical Support Center (SWMTSC) for discharging their mandate as prescribed in the new Solid Waste Management Act. Specific outputs will include: (1) support for establishing the policy, regulatory, and institutional framework for SWM, including the operationalization of the SWMC and SWMTSC, and drafting of the national SWM policy and strategy; (2) support for capacity development of SWMC and SWMTSC; and (3) support for developing relevant issue-specific regulations, guidelines, and/or standards for improving SWM at the regional and local levels.	
<b>Detail Description of Actual Services Provided by CC's Experts and Staff:</b>  Commitment Consultants in association with IPE provided capacity development support to the Waste Management Council (SWMC) and Solid Waste Management Technical Support Center (SWMTSC) of Nepal for discharging their mandate as prescribed in the new Solid Waste Management Act. Specific outputs of the assignment included:  <ul style="list-style-type: none"> <li>• Support for establishing the policy, regulatory, and institutional framework for SWM, including the operationalisation of the SWMC and SWMTSC, and drafting of the national SWM policy and strategy</li> <li>• Support for capacity development of SWMC and SWMTSC</li> <li>• Support for developing relevant issue-specific regulations, guidelines, and/or standards for improving SWM at the regional and local levels.</li> <li>• Commitment Consultants provided its input in the assignment with expertise support of the Team Leader in the project.</li> </ul>	

**Project 7**

<b>Name of the Project: Stunting Free Villages: Impact Monitoring of WASH Service Outcomes.</b>	
<b>Country:</b> Bangladesh <b>Name of the Assignment:</b> "Stunting Free Villages: Impact Monitoring of WASH Service Outcomes" <b>Assignment Location:</b> Patuakhali, Barisal, Bangladesh	<b>Duration of assignment:</b> 25 (twenty-five) months <b>Status:</b> Completed

<b>Name of Client:</b> Max Foundation, Netherlands	<b>Professional Experts/Staff provided by Your Organization:</b> No. of Expert: 08, No of Staff: 04, No of person-Months: 22
<b>Start Date (Month/Year):</b> March 2015	<b>Completion Date: (Month/Year):</b> March 2017
<p><b>Objectives of the Project:</b> Bangladesh has been successful in increasing access to basic water &amp; sanitation facilities, the malnutrition rates in Bangladesh are amongst the highest in the world. The enigma of nutritional impact not necessarily being correlated with improved access to WASH, or income, or food production is a subject of grave concern. This concept note proposes to undertake action research on the effectiveness of mobilizing communities to achieve “stunting free village” status. Central to this initiative is the recognition that parents are the principal researchers (PR) in child growth monitoring against targeted fecal-oral (and other nutritional) actions to eradicate the incidence of stunting. Project objective are: 1) To trigger a demand for eradicating stunting; 2) To enable households to innovate and practice behaviors individually and collectively as principal researchers to achieve stunting free village status; 3) To identify and record behaviors and impacts leading to stunting free village status.</p>	
<p><b>Detail Description of Actual Services Provided by CC’s Experts and Staff:</b> Commitment Consultants conducted an Action Research titled “Stunting Free Villages: Impact Monitoring of WASH Service Outcomes”. The main activities in the project included;</p> <ul style="list-style-type: none"> <li>• Developed the ‘stunting free village’ approach</li> <li>• Developed participatory implementation tools</li> <li>• Developed mobile growth monitoring application</li> <li>• Training of 2 PNGOs on the approach</li> <li>• Growth monitoring data collation and analysis</li> <li>• Mobile monitoring feedback &amp; field support</li> <li>• Best practice workshop for PNGOs/communities</li> <li>• Revise implementation to include best practices</li> <li>• Key ingredients that deliver nutritional impact</li> <li>• Summaries of the stunting free village approach</li> <li>• Final report of the action research</li> </ul>	

**Project 8**

<b>Name of the Project:</b> Urban Public and Environmental Health Sector Development Project (UPEHSDP)	
<p><b>Country:</b> Bangladesh</p> <p><b>Name of the Assignment:</b> Program Support Consultancy (PSC) of Urban Public and Environmental Health Sector Development Project (UPEHSDP)</p>	<p><b>Duration of assignment:</b> 50 (Fifty) months</p> <p><b>Assignment Location:</b> Dhaka, Chittagong, Rajshahi, Khulna, Sylhet and Barisal. (Seven City Corporation of Bangladesh)</p> <p><b>Status:</b> Completed</p>
<p><b>Name of Client:</b> Government of Bangladesh (GOB) and Asian Development Bank (ADB)</p>	<p><b>Professional Experts/Staff provided by Your Organization:</b> No. of Expert: 02 No of person-Months: 28 No. of staffs – 20 person months</p>
<b>Start Date (Month/Year):</b> October, 2012	<b>Completion Date (Month/Year):</b> June, 2017
<b>Name of the associated Consultants, if any:</b> IPE Global (Pvt.) Ltd. & Commitment Consultants, Bangladesh	
<p><b>Position of the senior professional experts of your firm performed in the project:</b></p> <ul style="list-style-type: none"> <li>• Urban Public and Environmental Health (UPEH) Program Reform Expert (International)</li> <li>• Behaviour Change Communications (BCC)/Community Participation Specialist</li> </ul>	
<p><b>Objectives of the Project:</b> The overall objective of Urban Public and Environmental Health Sector Development Program (UPEHSDP) is to improve the public and environmental health conditions in the urban areas of Bangladesh. The ensuing program will improve the health status of the citizen and poor community in urban areas and help the country to make progress on the Millennium Development Goals</p>	

(MDGs) relating to child and maternal health care communicable diseases (MDGs 4, 5, and 6); and improve urban sanitation (MDG7). Municipal solid waste management (SWM) in these cities are deficient in all components i.e. source segregation, primary collection, waste treatment, scientific disposal of waste, etc. The existing SWM also lack adequate MSW infrastructure facilities to meet the norms stipulated in The Local Government (Pourashava) Act, 2009.

**Detail Description of Actual Services Provided by CC's Experts and Staff:**

- Assist UPEHU to implement the following policy reform areas of the program: (a) strengthening institutional arrangements; (b) improving urban and environmental health public service delivery and (c) strengthening governance and management; Review existing policies and programs for urban public and environmental health; prepare and promulgate a national policy framework and guideline for solid waste management and sanitary slaughter houses, including strategies, activities, programs and policies for managing solid waste management and food safety;
- Review the proposed system for solid and medical waste collection, transfer and disposal; food and water safety and hygiene; supervise implementation of the reforms;
- Assist LGD and MOEF develop a national solid waste management strategy, and prepare action plans for solid waste management;
- Assist LGD and city corporations in the development of policies related to municipal and solid waste management, medical waste management, and food safety;
- Develop and conduct various training program for the city corporation and project staffs
- Develop BCC strategy and number of BCC materials (printing leaflet, calendar, sticker, etc.)
- Develop 3R documentary and training module, etc.

**Project 9**

<b>Name of the Project: Bangladesh Health, Nutrition and Population Sector Program (HNSP)</b>	
<b>Country:</b> Bangladesh	<b>Duration of assignment:</b> 10(ten) months <b>Status:</b> Completed
<b>Assignment Location:</b> All over Bangladesh	
<b>Name of the assignment:</b> Performance evaluation of civil works investment of Bangladesh Health Nutrition and Population Sector Program (HNSP)  <b>Name of Client:</b> Ministry of Health and Family welfare and World Bank	<b>Professional Experts/Staff provided by Your Organization:</b> No of Expert: 01 No of Staff: 09 No of person-Months: 10
<b>Start Date (Month/Year):</b> January, 2011	<b>Completion Date (Month/Year):</b> October, 2011
<b>Name of the Lead Consultant Firm, if any:</b> Commitment Consultants, IPE Global (P) Ltd. and Yousuf & Associates, Bangladesh	
<b>Position of the senior professional experts of your firm performed in the project:</b> Program Management Expert	
<b>Objectives of the Project:</b>  Bangladesh Health, Nutrition and Population Program (HNPSP, 2005 to 2011) is a USD 4.2 billion Government led program that supports the implementation of the Ministry of Health and Family Welfare's (MOHFW) Strategic Investment Plan (SIP, 2003–2011). HNPSP seeks to deliver the Health Sector's contribution to the Government's Poverty Reduction Strategy. Out of the total fund of 4.2 billion, USD 684 million is pooled funds, which comprises of World Bank credit of USD 300 million and trust fund of USD 384 million of seven development partners. Health Engineering Department (HED) of MOHFW and Public Works Department (PWD) undertake civil works in the health sector across the country. In every year the Government and Donors carry out an Annual Program Review (APR) of HNPSP. A key recommendation made during the APR of 2009 was to carry out a survey of the civil works constructed and/or upgraded to better understand the process – planning, implementation, contract management, utilization, maintenance, etc. Commitment Consultants, as a partner organization of IPE (India), was assigned to provide its management expert input on the planned components of the project.	

**Detail Description of Actual Services Provided by CC's Experts and Staff:**

Commitment Consultants in association with IPE conducted a performance evaluation survey of the civil works in the health sector across the country, which were constructed by Health Engineering Department (HED) of MOHFW and Public Works Department (PWD). Under the annual Program Review (APR) of HNPS, following performance was evaluated:

- Construction quality
- Planning, implementation, contract management, utilization, maintenance, etc.
- Enrollment of IPD and OPD and quality of services
- Commitment Consultants with its management expert contributed in the performance evaluation task for MOHFW

**Project 10**

<b>Name of the Project: Environmental and Social Management Plan (ESMP) for Capacity building to reduce Lead Contamination in Bangladesh</b>	
<b>Country:</b> Bangladesh <b>Name of the Assignment:</b> Environmental and Social Management Plan (ESMP) for Capacity building to reduce Lead Contamination in Bangladesh <b>Assignment Location:</b> Bangladesh	<b>Duration of assignment:</b> 11 Months <b>Status:</b> Completed
<b>Name of Client:</b> SEURECA	<b>Professional Experts/Staff provided by Your Organization:</b> No. of Expert: 02, No of Staff: 3
<b>Start Date (Month/Year):</b> Nov, 2022	<b>Completion Date (Month/Year):</b>
<b>Objectives of the Project:</b> <ul style="list-style-type: none"> <li>• A framework document at the beginning of the service;</li> <li>• A summary of the information relating to the environmental and social analysis contained in the NEP, completed if necessary.</li> <li>• A provisional ESMP in French and English to be produced.</li> <li>• A modified ESMP, in French and English, taking into account the comments made on the provisional ESMP, to be produced.</li> <li>• Organization of a meeting to present the results and proposals to the project stakehol</li> </ul>	
<b>Actual Work has been done on the field to develop the Environmental and Social Management Plan (ESMP):</b> <ul style="list-style-type: none"> <li>• Description of mitigation measures</li> <li>• Implementation of environmental and social monitoring</li> <li>• Organizational procedures</li> <li>• Implementation schedule and cost estimate</li> <li>• Definition of monitoring indicators</li> <li>• Long-term monitoring of remediated sites and the inventory of containment sites</li> <li>• Memory of landfills</li> </ul>	

**Project 11**

<b>Name of the Project: Situation Analysis of Joint Emergency Operations Centers in Cox's Bazar District, Bangladesh.</b>	
<b>Country:</b> Bangladesh <b>Name of the Assignment:</b> Situation Analysis of Joint Emergency Operations Centers.  <b>Assignment Location:</b> Cox's Bazar	<b>Duration of assignment:</b> Four (4) Months <b>Status:</b> Completed

<b>Name of Client:</b> EC & IMPACT	<b>Professional Experts/Staff provided by Your Organization:</b> No. of Expert: 04, No of Staff: 06, No of person-days: 48
<b>Start Date (Month/Year):</b> April 1, 2019	<b>Completion Date (Month/Year):</b> Aug, 2019
<b>Objectives of the Project:</b> To identify inter points for more effective ECHO support to the function of the adapted EOC for emergency preparedness and response.	
<b>Detail Description of Actual Services Provided by CC's Experts and Staff:</b> The main activities in the project included; Inception Workshop, Review Secondary Data, Identify Stakeholders, Physical Verification, Develop Questionnaire, Conduct KII and Workshop, Identify Different Resources, Organize Validation Workshop, Produce Final Report, Establish a Monitoring System.	

### Project 12

<b>Name of the Project:</b> GRANT-9194 BAN: Rupsha 800-Megawatt Combined Cycle Power Plant Project - C-4 Supporting Socially Inclusive Development for Better Livelihood Through Rupsha Power Plant Project (50161-003), funded by Asian Development Bank (ADB)	
<b>Country:</b> Bangladesh <b>Name of the Assignment:</b> GRANT-9194 BAN: Rupsha 800-Megawatt Combined Cycle Power Plant Project - C-4 Supporting Socially Inclusive Development for Better Livelihood Through Rupsha Power Plant Project (50161-003),  Funded by: Asian Development Bank (ADB)  <b>Location:</b> Khalishpur, Khulna	<b>Duration of assignment:</b> 31 Months
<b>Name of Client:</b> North-West Power Generation Company Limited (NWPGL), Bangladesh	<b>Professional Experts/Staff provided by Your Organization:</b> No. of Expert: 08, No of person-Months: 45
<b>Start Date (Month/Year):</b> August 2019	<b>Completion Date (Month/Year):</b> May, 2023
<b>Name of the associated Consultants, if any:</b> Practical Action, Bangladesh (Lead firm)	
<b>Objectives of the Project:</b>  1. The key objective of the assignment is to implement the planned activities under the JFPR grant in line with international best practices as described in grant report and provide required deliverables. 2. The assignment is expected to commence in the second quarter of 2019 and will continue until the fourth quarter of 2021.	
<b>Detail Description of Actual Services will be provided by CC's Experts and Staff:</b> The main activities in the project included;  <ul style="list-style-type: none"> <li>• Support procurement of the 10kW solar system, IT and science laboratories and inclusive educational facilities (as per the Grant Report); and monitor the installation of facilities and equipment</li> <li>• Conduct needs assessment for school buses and other educational materials (as per the Grant Report), and support and monitor procurement of them, if applicable</li> <li>• Develop a training program with materials, and facilitate training on: (a) safe and efficient use of electricity, (b) how to use IT and science labs, (c) how to utilize IT technology to improve education and information access and conduct an evaluation survey after each training</li> <li>• Undertake needs assessment for determining the most appropriate trainings for livelihood activities and employment opportunities for households in the project affected area; develop a training program with materials; prepare selection criteria for the trainees and mobilize community members with selecting trainees based on the criteria</li> <li>• Provide trainings for the trainees selected (a) to promote energy-based livelihoods through access</li> </ul>	

to electrical appliances; (b) to increase employment opportunities for technical and administrative work; and conduct evaluation surveys after each training

- Develop a workshop program with materials for improving social and gender awareness workshops for NWPGL and facilitate workshops (with at least 50 staff) at its headquarters and regional hubs; and conduct evaluation surveys after each workshop
- Develop materials and programs and conduct the school outreach event series to encourage male and female students to consider a career in the energy sector
- Develop socially inclusive community development strategy for NWPGL
- Implement the project communication strategy, supporting information dissemination and consultations; preparing FAQs for the project and grant; updating the Rupsha 800MW CCPP project section in social media of NWPGL, if any; preparing fact sheets for information sharing; and supporting the PMU and project team with activities conducted under the JFPR grant

**Project 13**

<b>Name of the Project: Biogas Generation and Demand Survey in Bangladesh</b>	
<b>Country:</b> Bangladesh  <b>Name of the Assignment:</b> Biogas Generation and Demand Survey  <b>Assignment Location:</b> Bangladesh	<b>Duration of assignment:</b> 04 (Four) months <b>Status:</b> Completed
<b>Name of Client:</b> Japan International Cooperation Agency (JICA)	<b>Professional Experts/Staff provided by Your Organization:</b> No of Expert: 02 No of Staff: 02 No of person-Months: 5
<b>Start Date (Month/Year):</b> December 2014	<b>Completion Date (Month/Year):</b> March 2015
<b>Name of the associated Consultants, if any:</b> E.Gen Consultants ltd. and Commitment Consultants.	
<b>Position of the senior professional experts of your firm performed in the project:</b> <ul style="list-style-type: none"> <li>• Quality Improvement Advisor and</li> <li>• Statistician and Econometric Expert</li> </ul>	
<b>Objectives of the Project:</b>  JICA funded a project, focused the research on a) Biogas potential market research b) Biogas potential manufacturing research c) Biogas potential supply chain research and d) Risks/issues identification for implementation.  Access to efficient and modern energy is extremely crucial for the developing nations to counter the economic and health issues and at the same time with the productive use of energy increase the economic growth and life standard of the deprived people. A well performing energy system can provide these people with income generating opportunities as well as to escape them from the awful impacts of poverty. Biogas is one of the best solutions for proven and widely used source of energy around the globe. There is not yet another wave of renewed interest in bio gas due to the increasing concern of climate change, indoor air pollution and increasing oil prices etc. Promotions of Biogas open opportunities to mitigate such concerns. Commitment Consultants successfully engaged with the Biogas Potential Market Research Biogas Potential Manufacture Research Biogas Potential Supply Chain Research Risk/Issues Identified for Implementation and Different methods were used for quantities and qualitative data collection, FGD, KII. The sample size was 1600 respondents.	
<b>Detail Description of Actual Services Provided by CC's Experts and Staff:</b> JICA engaged E.Gen and Commitment Consultants to conduct a countrywide survey on 'Biogas Generation and Demand'. It was successfully done to assess Biogas Potential Market Research, Biogas Potential Manufacture Research, Biogas Potential Supply Chain and Research Risk/Issues Identified for Implementation.	
<ul style="list-style-type: none"> <li>• Different methods were used for quantities and qualitative data collection, FGD, KII.</li> </ul>	

- The sample size was 1600 respondents.
- The respondents included, biogas manufacturers, users, other beneficiaries, related government counterparts, etc.

### Project 14

<b>Name of the Project: South Asia Tourism Infrastructure Development Project- SATIDP (Bangladesh Portion) under ADB loan no: 2580-BAN</b>	
<p><b>Country:</b> Bangladesh</p> <p><b>Name of the Assignment:</b> Project Management, Design and Supervision Consultancy (PMDSC) for South Asia Tourism Infrastructure Development Project- SATIDP (Bangladesh Portion), under ADB loan no: 2580-BAN</p> <p><b>Assignment Location:</b>  <b>Archaeological Site:</b></p> <ul style="list-style-type: none"> <li>• Paharpur Vihara: District Naogaon</li> <li>• Mahasthangarh: District Bogra</li> <li>• Kantajew Temple: District Dinajpur</li> <li>• 60 Dom Mosque, Bagerhat: District Bagerhat</li> </ul>	<p><b>Duration of assignment:</b> 42 (forty-two) months</p> <p><b>Status:</b> Completed</p>
<p><b>Name of Client:</b> Department of Archaeology, The Government of the People's Republic of Bangladesh Ministry of Cultural Affair. and Asian Development Bank (ADB)</p>	<p><b>Professional Experts/Staff provided by Your Organization:</b></p> <p>No. of Expert: 06                  No of Staff: 04                  No of person-Months: 94</p>
<p><b>Start Date (Month/Year):</b> February 2013</p>	<p><b>Completion Date (Month/Year):</b> July 2016</p>
<p><b>Name of the associated Consultants, if any:</b> IPE Global (Pvt.) Ltd. India; Commitment Consultants, Bangladesh; Consultancy for Conservation and Development Ltd. UK; and ANZDEC Ltd., New Zealand.</p>	
<p><b>Objectives of the Project:</b>                  This project focuses on providing consulting services to assist the Project Management, Design and Supervision Consultancy (PMDSC) to implement the Investment Program in the district of Naogaon, Bogra, Dinajpur and Bagerhat to be covered under the Infrastructure Development Investment Program for Tourism.</p>	
<p><b>Detail Description of Actual Services Provided by CC's Experts/Staff:</b></p> <ul style="list-style-type: none"> <li>• Assist the Project Management and Implementation Unit (PMIU), based within the Department of Archaeology, Ministry of Cultural Affairs, GOB</li> <li>• Developed detailed design, supervision, monitoring of the project including the capacity development activities</li> <li>• Ensured that community tourism specialist and the marketing &amp; promotion specialist work in close collaboration with Bangladesh Parjatan Corporation (BPC) and DOA under the guidance of the project management specialist</li> <li>• <b>PMDSC</b> team worked in close liaison with the PMU and executed the following tasks:                         <ol style="list-style-type: none"> <li><b>1. Preparation of Master Plan and Management Plan:</b> All specialists contributed to the preparation of the Master Plan and Management Plan for each heritage site of the project. Established operating procedures for the 04 sites management.</li> <li><b>2. Detailed Design:</b> The consultants finalized all additional subproject elements (which were not included by the preparatory consultants but critically important for the site/project).</li> <li><b>3. Contract Packages:</b> Based on the detailed engineering design, the consultants prepared all necessary tender drawings, specification, bill of quantities, detailed cost estimates, implementation schedule, quality control programs and contract packages considering ADB requirements and ease of implementation. The specifications has been used detailed in Bangladesh /international standards.</li> <li><b>4. Bidding Documents:</b> The consultants prepared necessary documentation using ADB's updated format required for competitive bidding, shopping, etc. which included instruction to bidders, employer's requirements, general and special conditions</li> </ol> </li> </ul>	

of contract, technical specifications, BOQ, tender drawings, forms of contract etc. Consultants assisted PMU in bid evaluation, award of contract and contract signing etc. **5. Construction Supervision and Contract Monitoring:** The consultants, as the engineer's representative under the contract, supervised construction of all the project components; monitored construction methods and quality control; certified that the quality of works conforms to the specifications and drawings; assessed the adequacy of the contractor's input materials, labour, equipment, and construction methods; resolution of contractual issues, furnished all revisions and detailed drawings as necessary during the continuance of the contract; attended third party inspections as necessary; examine the contractor's claims for variations/extension, additional compensation, etc., and prepared recommendation for approval by PMIU; assisted in preparing planned maintenance procedures; assisted and checked installation and commissioning. Record the work measurement, certify the contractor's claim and assisted PMIU in contract monitoring and in preparation of the "as built" drawings. **6. Supervision during Implementation:** The supervision services included engineer's supervision and management of civil works

Following are the broad activities were taken up: (1) Contract administration and management; (2) Scrutinize the contractor's detailed work program; (3) Scrutinize construction methods proposed by contractor including environmental, safety, personnel and public issues. Quality assurance system including verification of material quality and certification; (4) Monitor resource mobilization and progress of work and contractors' adherence to the work plan. Take necessary action to expedite progress for meeting the timeline; (5) Measurement of quantities and certification & Certify at completion, 'built as per drawings'; (6) Carryout supervision of all the works including periodical inspection of Contractor's machinery and equipment; (7) Inspect the works at appropriate intervals during defect liability period and Take necessary action as per the clauses of certification; (8) Prepare construction supervision manual, maintenance manual, monthly and quarterly progress reports; (9) Assist PMIU in computer aided monitoring of progress / implementation, project management and M.I.S. of project.

## **AWARDS**

1. Dr. Shafiul Azam Ahmed (Director, CC) and Commitment Consultants jointly has been awarded "Safer **End of Engineering Life (SEEL) Champions**" in 2021 by Engineering X. It is an international collaboration, founded by the Royal Academy of Engineering and Lloyds Register Foundation, UK.

2. Monir Alam Chowdhury and Commitment Consultants won the **Best Technical Paper Presentation** in 2nd ICON SWM 2011 Excellence Award in Center for Quality Management System, Jadavpur University under International Society of Waste Management, Air & Water.

## **Publication of Commitment Consultants**

Contribution as research work for the book titled '**Solid Waste Management in the World's Cities: Water and Sanitation in the World's Cities 2010**', Published by: UN-HABITAT, Years: 2010, ISBN: 978-1-84971-170-8, Page No.: 60-61.

Online link: <https://unhabitat.org/books/solid-waste-management-in-the-worlds-cities-water-and-sanitation-in-the-worlds-cities-2010-2/>

For more information, please visit our following web-site:

<http://commitmentconsultants.com/>

## Annexure 1

### The Panel Team of Experts of Commitment Consultants

	Name	Professional Background	Position	Expertise
1.	<b>Monir Alam Chowdhury</b> MSS in Sociology	<ul style="list-style-type: none"> <li>Consultant in Local Government Division Project, funded by ADB</li> <li>Previous Project Coordinator in World Bank and UNDP project; Short term Consultant of World Bank and ADB funded project.</li> </ul>	CEO, Commitment Consultants	Administration, Management, Business Development. Specialization in Waste Management, BCC, Research, etc.
2.	<b>Shafiul Azam Ahmed</b> PhD in Engineering	<ul style="list-style-type: none"> <li>Former water and sanitation specialist of World Bank, Bangladesh</li> <li>A reputed international consultant</li> </ul>	Director, Commitment Consultants	Project Development, Water and sanitation, SWM.
3.	<b>Md. Mahbubur Rahman</b> B. Sc Engineering	Worked with a number of World Bank and ADB projects	Consultant	Procurement and Engineering
4.	<b>Md. Shafiqul Alam</b> PhD in Archeology	Former Director General of Department of Archaeology	Consultant	Archaeology and heritage Management
5.	<b>Mr. Abul Khair</b> B. Sc. Engineering (Civil), BUET, Dhaka, Bangladesh	Executive Engineer, PWD	Consultant	Civil and Structural Specialist (Engineer)
6.	<b>Professor Dr. Shahnaj Husne Jahan</b> Ph.D in Archaeology, Deccan College Post-graduate and Research Institute, Pune, India	Professor Department of General Education Director Center for Archaeological Studies University of Liberal Arts Bangladesh	Consultant	Cultural Heritage Management and Tourism Specialist
7.	<b>Umme Farwa Daisy</b> Post Graduate in Psychology, Rajshahi University	Worked with a number of GoB , World Bank and NGO	Consultant	Community Development and PRA/CLTS Training Specialist

8.	<b>AKM Rahmat Howlader</b> Post Graduate in Mass Communication and Journalism, Dhaka University	Worked in many International and National NGOs.	Consultant	Video Expert
9.	Md. Abdul Gofran Engineer	Former Project Director of LGED	Consultant	Biogas, Renewable energy
10.	<b>Julia Ahmed</b>	Worked as consultants/Experts for last 25 years	Consultant	Women, Gender, etc
11.	<b>Shams Uddin Md. Rafi</b> M.S.S	Worked with number of national and international organizations	Consultant	Capacity Building, Training, etc.
12.	<b>Sheikh Maruf Hossain</b> M. Arc	Assistant Professor Architecture discipline, Khulna University	Consultant	Architecture, Planning, Designing, etc.
13.	<b>Mohammad Abu Hamid</b> Engineering in Electronics and Communication from Karnataka University, India	Worked in many IT related Project	Consultant	Mobile App Development/IT Specialist
14.	<b>Mr. Ahsanul Haque</b> M.Sc.in Remote Sensing and Geographic Information Systems at Asian Institute of Technology (AIT), Thailand	Worked in many IT related Project	Consultant	IT Expert
15.	<b>Ms. Afroza Begum</b> M.A.c in Nutrition and Health Wageningen University, The Netherlands	Worked as a Director (Program, Research & Implementation) in Bangladesh Breastfeeding Foundation (BBF)	Consultant	Nutrition Expert
16.	<b>Dr. Khurshed Alam</b> Ph. D. (Sociology), University of Poona, India	Worked as a Managing Director in BISR Consultants Ltd.	Consultant	Social Expert
17.	<b>Dr. A K M Abdul Hannan Bhuiyan</b> Post-Doctoral Fellow in Agricultural Economics, Kyushu University, Japan	Founder Vice-chancellor Patuakhali Science and Technology University	Consultant	Agro- Economist
18.	<b>Waled mahmud</b> MDS, M.Com, PG Dip. Mgt. Consultancy	Working in an international research organization as GM. Worked as a consultant in many international and national organization, focusing on WATSAN, SWM, urban development, etc	Consultant	Project Development, Research, Water and sanitation, WM and sanitation.

19.	<b>Dr. Julia Ahmed</b> MBBS, MPH	Executive Director, Nova Consultancy	Consultant	SRHR, GAD, etc
20.	<b>Syed Mohammad Wasimul Bari</b> Master of Business Administration (MBA), in Finance Bangladesh (AIUB)	Worked in International and National Project	Associate Consultant	Study, Research, Evaluation, etc
21.	<b>Dr. Tariq Bin Yousuf</b> M.Sc in Engineering, BUET PhD in WM from Loughborouh University, UK	Superintendent Engineer, DNCC	Consultant	Waste management, Sanitation, Climate Change, urban development, etc
22.	<b>Abdul Latif Khan</b> M.A	A reputed national and international expert on Disaster management	Consultant	Disaster Risk Reduction, Disaster management, etc
23.	<b>Farida Yeasmin</b> LLB M.A	Director of Law Research and Development Center (LRDC).	Consultant	Human Rights, Gender, Social development, etc
24.	<b>Selina Ahmed</b> M.A	A reputed national and international expert Gender	Consultant	Gender ,women's empowerment, Child protection, Sexual Reproductive Health Rights, Gender Based Violence, etc
25.	<b>Fahriya Ferdous</b> LLM LLB	A reputed national Legal Consultant	Consultant	Enrolled as an Advocate of the Bangladesh Bar Council
26.	<b>Dr. Md. Rezaul Karim</b>	Professor (Department of Civil and Environmental Engineering) Islamic University of Technology (IUT)	Consultant	Solid Waste Management, Waste management, Sanitation, WASH, etc
27.	<b>A K M Rezaul Haque Khan</b> M.A	A reputed national and international expert on Environment Assessment	Consultant	ESMP, Environment, Climate change, etc
28.	<b>Rifat Shahpar Khan</b> M.A	A reputed national and international expert on Disability and Gender	Consultant	Social inclusion and disability rights, inclusive education, safeguarding public health, Gender, etc
29.	<b>Samsun Nahar Aziz Lina</b> LLB, M.A	A reputed national and international expert on Gender	Consultant	Gender
30.	<b>Abu Tareq Muhammad Salahuddin</b> Communication Skill" by the British Council, MBBS	A reputed national and international expert on Communication	Consultant	Communication
31.	<b>Md. Ahmedur Rahman Talukder</b> B. Sc. Engineering	A reputed national and international expert on IT and Science	Consultant	IT and Science trainer
32.	<b>Mahbub Ul Huda</b> M.A	A reputed national and international expert on Science Lab trainer	Consultant	Science Lab trainer

33.	<b>Augustin Baroi</b> MDS M.A	A reputed national and international expert on Disaster Risk Management (DRM)	Consultant	Livelihood, Climate Change Adaptation (CCA), Disaster Risk Management (DRM), etc
34.	<b>Ferdausi Maoula</b> M.A	A reputed national and international expert on Disability and Gender	Consultant	Disability and Gender
35.	<b>Muhammad Humayun Kabir</b> PhD in GIS and agriculture MSc in Agricultural Extension	Reputed National and International Expert in Technology Adoption, Climate-Smart Agriculture, Climate Change Adaptation, Food Security, and Impact Analysis	Consultant	Technology adoption, Climate smart agriculture, Climate change adaptation, Food security, Impact analysis
36.	<b>Professor, Dr. Md. Sekender Ali</b> Ph.D. (Agricultural Extension Education) M. Sc. (Agricultural Extension Education)	Reputed National and International Expert in Climate Change, Agriculture, and Digital Agricultural Solutions	Consultant	Climate Change, Agriculture, and Digital Agricultural
37.	<b>K. M. Rezaul Haque</b> Masters in Environmental Sciences BSc in Environmental Sciences	Reputed National and International Expert in Environmental and Climate Change Domains	Consultant	Environmental Specialist, International Environmental and Social Assessment Specialist, and International Climate Change and Disaster Risk Management Specialist
38.	<b>Khandakar Mohammad Abdul Qayum</b> M.Sc. in Environmental Sciences B.Sc. (Honours) in Environmental Sciences,	Reputed National and International Expert in Environment, Climate Change, and Environmental Management	Consultant	Environment, Climate Change, and Environmental Management
39.	<b>Dr Md. Zakir Hossain</b> PhD in Urban Studies, Master of Governance and Development, Bachelor of Urban and Rural Planning	Professor, URP, Khulna University, National and International Expert in City Master Plan Projects, with Notable Contributions to the Asian Disaster Preparedness Centre, the Urban Development Directorate (UDD), and Urban Sustainable Development.	Consultant	Urban Development Directorate (UDD), and Urban Sustainable Development. Expertise Encompasses Sustainability, Social and Economic Development, and Climate Change and Cities
40.	<b>Nur Mohammad Ha-Mim</b> Master of Urban and Rural Planning Bachelor of Urban and Rural Planning	Reputed National and International Expert in Urban Planning, Climate Change, Disaster Management, and Geographic Information Systems (GIS)	Consultant	Climate Change, Disaster Management, and Geographic Information Systems (GIS)

## Annexure 2

### Project Data Sheets (PDS) of Commitment Consultants

#### SOLID WASTE MANAGEMENT (SWM)

##### Project 1

<b>Name of the Project: Comprehensive Training Program on Plastic Waste Reduction and Single Use Plastic (SUP) Alternatives, and SUP Value Chain Study, Including Dissemination Workshops and Report Publication- Bangladesh</b>	
<b>Country:</b> Bangladesh	<b>Duration of assignment: 14 Months</b> <b>Status:</b> Ongoing
<b>Name of the Assignment:</b> Comprehensive Training Program on Plastic Waste Reduction and Single Use Plastic (SUP) Alternatives, and SUP Value Chain Study, Including Dissemination Workshops and Report Publication- Bangladesh	
<b>Funded by:</b> South Asia Co-operative Environment Programme (SACEP)	
<b>Name of Client:</b> South Asia Co-operative Environment Programme (SACEP)	<b>Professional Experts/Staff provided by Your Organization:</b> No. of Expert: 6
<b>Start Date (Month/Year):</b> Mar 2025 – April 2026	<b>Completion Date: (Month/Year):</b> 2026
<b>Aim of the project</b> <ul style="list-style-type: none"> <li>To <b>significantly reduce plastic waste</b> generation in Bangladesh, particularly from single-use plastics (SUP).</li> <li>To <b>promote and facilitate the adoption of sustainable alternatives</b> to SUP across sectors.</li> <li>To <b>enhance awareness and build capacity</b> of key stakeholders (e.g., government officials, informal sector, community members) on effective plastic waste management.</li> <li>To <b>design and implement a targeted training program</b> focused on the environmental impacts of plastic waste and practical solutions.</li> <li>To <b>analyze the value chain of SUP</b>, identifying gaps, intervention points, and opportunities for improving recycling and waste reduction.</li> <li>To <b>engage stakeholders through consultations and workshops</b> for collaborative solution-building and knowledge sharing.</li> <li>To <b>develop evidence-based recommendations</b> for policies and strategies that support circular economy and sustainable waste governance.</li> <li>To <b>support the Government of Bangladesh</b> in meeting national and international environmental commitments related to plastic pollution and sustainable development.</li> </ul>	
<b>Detail Description of Actual Services will be provided by CC's Experts and Staff:</b> <b>1. Project Planning and Coordination</b> Develop a detailed work plan, implementation strategy, and timeline in coordination with the client and key stakeholders. Ensure alignment with national priorities, existing policies (e.g., National Plastic Action Plan), and stakeholder expectations.	

Coordinate with relevant government bodies, NGOs, private sector actors, and community representatives for smooth project execution.

**2. Capacity Building and Training Program Implementation**

**Needs Assessment:** Design and execute a stakeholder-specific needs assessment to identify knowledge gaps, practices, and capacity-building requirements on plastic use and waste.

**Curriculum Development:** Create a modular, interactive training curriculum addressing plastic waste impacts, SUP alternatives, waste management practices, and behavioral change techniques.

**Training Delivery:** Facilitate and deliver high-quality training programs using participatory and inclusive methods, both in-person and online, targeting various audiences including government officials, municipal staff, informal waste workers, and community leaders.

**Evaluation and Reporting:** Measure training effectiveness through pre- and post-training assessments, compile training feedback, and generate final training reports with recommendations for further improvements.

**3. SUP Value Chain Study**

**Pre-feasibility Analysis:** Conduct a technical, economic, and environmental assessment of integrated solid waste management solutions, including landfill rehabilitation and waste-to-energy options.

**Value Chain Mapping and Analysis:** Analyze the full lifecycle of SUP products in the Dhaka South City context—covering production, distribution, consumption, and disposal. Identify key actors, flow of materials, leakage points, and recycling opportunities.

**Policy and Market Review:** Examine existing policies, market conditions, and informal sector dynamics to understand enabling and hindering factors for SUP reduction and sustainable waste management.

**4. Stakeholder Engagement and Advocacy**

**Consultations and Workshops:** Organize and facilitate stakeholder workshops, roundtable discussions, and consultation meetings with government agencies, private sector, NGOs, and waste workers to share findings and co-develop solutions.

**Capacity Strengthening for Policymakers and Enforcers:** Provide strategic advice and knowledge transfer to support evidence-based policymaking and enforcement capacity.

**5. Knowledge Management and Dissemination**

**Development of Knowledge Products:** Prepare technical reports, policy briefs, training manuals, and IEC materials to support broader outreach and education efforts.

**Dissemination Workshop:** Plan and conduct a final dissemination event to present study findings, training outcomes, and policy recommendations to a wider audience, including government, development partners, and civil society.

**Final Reporting:** Deliver comprehensive project documentation, including lessons learned, challenges, success stories, and strategic recommendations for scale-up.

**Project 2**

<b>Name of the Project: Safer End Engineering Life (SEEL) - Champions Stage 2 22/23</b>	
<p><b>Country:</b> Bangladesh</p> <p><b>Name of the Assignment:</b></p> <p>Promoting better environment, health and Social Protection in the small-scale plastic recycling industry in Bangladesh.</p> <p><b>Funded by:</b> Royal Academy of Engineers (RAE), UK</p> <p>Location: Dhaka and Chattogram city corporation areas, Bangladesh</p> <p><b>Name of Client:</b></p>	<p><b>Duration of assignment:</b></p> <p><b>Status:</b> Completed</p> <p><b>Professional Experts/Staff provided by</b></p>

<b>Royal Academy of Engineers (RAE), Engineering X, UK</b>	<b>Your Organization:</b> No. of Expert: 3, No of mid-level staff: 2, No. Of field level staffs: 4
<b>Start Date (Month/Year) : Nov 2022 - Oct 2024</b>	<b>Completion Date (Month/Year): 2024</b>
<p><b>Aim of the project</b> To promote better environmental, health, and social protection in the small-scale plastic recycling industry in Bangladesh.</p> <p><b>Specific objectives of the project</b> The specific objectives of the project were as mentioned below:</p> <ul style="list-style-type: none"> <li>• To provide a livelihood to workers, stimulate local economic activity, and prevent plastic pollution</li> <li>• To control of noxious gases, water, and soil pollution, which has a link with environmental issues</li> <li>• To protect the workers who are in danger of air pollution, such as by producing toy letter blocks that are unsafe for them as well as for the children, it has negative impacts on their health.</li> <li>• To ensure the safety and hygiene of women workers, gender bias in salary, and child labor in waste-picking, it provides negative impacts on social issues.</li> </ul>	
<p><b>Detail Description of Actual Services will be provided by CC's Experts and Staff:</b> The main activities in the project included;</p> <ul style="list-style-type: none"> <li>• Recruit a team of experienced experts and well-trained staffs</li> <li>• List the plastic recycling factories in Dhaka and Chattogram</li> <li>• Selection factories for conducting survey</li> <li>• Conducted survey, FGD and KII and analysis</li> <li>• Workshop jointly with BPGMEA, where the participants were the owners and staffs of small scale plastic recycling factories</li> <li>• Provided training to the factory workers and field staffs</li> <li>• Discussion event with BPGMEA and recycling factory owners</li> <li>• Identifies scope of supporting recycling factories</li> <li>• Signed MOU and provided few health and safety items support to number of small scale plastic recycling factories.</li> <li>• Developed banner, festoons, wall poster, etc and provided awareness materials to few factories</li> <li>• Attended ISWA conference at Oman</li> </ul>	

### Project 3

<b>Name of the Project: Pre-Feasibility Study: Support for Establishing of Circular Economy through Integrated Solid Waste Management in the Coastal Region of Bangladesh</b>	
<p><b>Country:</b> Bangladesh <b>Name of the Assignment:</b> Pre-Feasibility Study: Support for Establishing of Circular Economy through Integrated Solid Waste Management in the Coastal Region of Bangladesh</p> <p>Funded by: Korea Ministry of Environment (KMOE)</p> <p><b>Location: Chattogram, Bangladesh</b></p>	<p><b>Duration of assignment:</b> <b>Status:</b> Completed</p>
<b>Name of Client: Chattogram City Corporation &amp; KEITI, KECC and HamSolz</b>	<b>Professional Experts/Staff provided by Your Organization:</b> No. of Expert: 4, No of person-Months: 12
<b>Start Date (Month/Year) :2022</b>	<b>Completion Date(Month/Year): 2023</b>
<p><b>Objectives of the Project:</b></p> <ul style="list-style-type: none"> <li>• Documents review and Data Collection from the field.</li> <li>• Site Visit (CCC area and surroundings) for observing the activities, facilities and all other details</li> </ul>	

about SWM.

- Conduct the necessary FGDs, KII and IDIs.
- Industrial site visits to observe the SWM situation
- 02 Landfill visit and assessment (Waste disposal pattern, waste generation quantity, transport, facilities, manpower, environmental impact, etc)
- Waste composition/characterization survey and analysis (Separate waste analysis for 02 blocks of CCC based on 02 landfill sites. It will be conducted in 03 income level areas)
- Chemical test of wastewater/leachate (will be tested in the lab)
- Assessment of City’s waste management system
- Site Visit/gather information of 09 surroundings municipalities of CCC about SWM activities, facilities, interlink of transportation/distance, etc.

**Detail Description of Actual Services will be provided by CC’s Experts and Staff:**

The main activities in the project included;

**City Visit, observation and reconnaissance**

- Primary waste collection by CCC
- Primary collection at HH level by PCSP (private collection service providers)
- Operation and activities at STS (secondary transfer station) and capacity of STS to store and carry out the waste transfer operation
- City markets (grocery and vegetable)
- Any informal/poorly managed secondary waste management facility
- Recycling initiatives, waste pickers activities, waste traders, circular economy, etc.
- Final disposal/Landfill sites

**Waste generation, collection and disposal survey**

- waste generation at the HH level
- Waste storage practice
- Waste collection system and disposal
- Amount of waste per non-motorize tri-cycle van

**Waste composition survey, laboratory test and analysis**

City waste was taken at the landfill sites from the tri-cycle vans, filled with collected waste. Then it was segregated and analyze. It has also collected waste water/leachate from landfill site, preserve it properly and gave it to the lab for chemical test

**Project 4**

<b>Name of the Project: Baseline Assessment for Plastic Debris flowing into Rivers and Seas of South Asia, 2020-21</b>	
<p><b>Country:</b> Bangladesh  <b>Name of the Assignment:</b> Baseline Assessment for Plastic Debris flowing into Rivers and Seas of South Asia, 2020-21                   Funded by: World Bank   <b>Location:</b> Various points of Bangladesh</p>	<p><b>Duration of assignment:</b>  <b>Status:</b> Completed</p>
<p><b>Name of Client:</b> World Bank   <b>Name of the lead Firm:</b> IMC Worldwide, UK</p>	<p><b>Professional Experts/Staff provided by Your Organization:</b>                  No. of Expert: 2, No of person-Months: 6</p>
<b>Start Date (Month/Year) : Oct, 2020</b>	<b>Completion Date (Month/Year): March,</b>

	<b>2021</b>
<p><b>Objectives of the Project:</b></p> <ul style="list-style-type: none"> <li>• Inception: Literature review, remote participate in regional workshop, inception report, etc.</li> <li>• Material flow analysis for waste plastics: Define main plastic supply chains and waste pathways,</li> <li>• collect data (secondary sources) for a material flow analysis of plastic waste, etc Regulatory and policy and programs stocktaking and gap analysis to plastics production and</li> <li>• recycling: Assess viability of solutions to reduce plastic waste problem, progress on EPR Stakeholder and socio-economic analysis</li> <li>• Hotspots assessment for marine plastic debris</li> <li>• Consolidation: Second remote workshop, contribute to Final (Regional) report</li> </ul>	
<p><b>Detail Description of Actual Services will be provided by CC's Experts and Staff:</b></p> <p>The main activities in the project included;</p> <ul style="list-style-type: none"> <li>• Engage with international team to finalize details of methodology and work plan</li> <li>• Material flow analysis for waste plastics</li> <li>• Define main plastic supply chains and waste pathways and understand the methodology</li> <li>• Regulatory and policy and programs stocktaking and gap analysis</li> <li>• Assess viability of solutions to reduce plastic waste problem</li> <li>• Stakeholder and socio-economic analysis</li> <li>• Stakeholder mapping and socio-economic analysis for each country</li> <li>• Hotspots assessment for marine plastic debris</li> <li>• Consolidation and Second remote workshop (Remote participation)</li> <li>• Contribute to Final (Regional) report.</li> </ul>	

**Project 5**

<b>Name of the Project: 'Urban Public and Environmental Health Sector Development Program</b>	
<p><b>Country:</b> Bangladesh</p> <p><b>Assignment Location:</b> All six cities of Bangladesh</p>	<p><b>Duration of assignment:</b> 11(eleven) months</p> <p><b>Status:</b> Completed</p>
<p><b>Name of the assignment:</b> Supplementary TA on Urban Public and Environmental Health Sector Development Program</p> <p><b>Name of Client:</b> Asian Development Bank (ADB)</p>	<p><b>Professional Experts/Staff provided by Your Organization:</b></p> <p>No of Experts: 03</p> <p>No of Staff: 10</p> <p>No of person-Months: 15</p>
<p><b>Start Date (Month/Year) :</b> November, 2009</p>	<p><b>Completion Date (Month/Year):</b> September, 2010</p>
<p><b>Name of the associated Consultants, if any:</b> IPE Global (Pvt.) Ltd. India. and Commitment Consultants</p>	
<p><b>Objectives of the Project:</b></p> <p>Bangladesh government signed a contract with ADB to develop a program on urban public health and environment sector development with the budget of \$ 130 million. Maximum portion of the budget allocation has been kept for solid and health care waste management. Commitment Consultants, as a partner organization of IPE (India), was assigned to provide its expert input on the planned components of the project</p>	
<p><b>Detail Description of Actual Services Provided by CC's Experts and Staff:</b></p> <p>CC in association with IPE provided Technical Assistance to ADB for UPEHSD program. Following were the main activities:</p> <ul style="list-style-type: none"> <li>• Reviewed the relevant policies, act and rules;</li> <li>• Reviewed the current situation of solid and healthcare waste management;</li> <li>• Reviewed the institutional, financial, human resource, occupational health safety, CDM applicability and provide guideline in these sectors;</li> <li>• Guideline to implement the acts and rules;</li> </ul>	

- Developed the working model
- Provided the typical engineering models for Secondary transfer station and sanitary landfill;  
Submitted the inception report, midterm report, three workshop reports and final report.

**Project 6**

<b>Name of the Project: Consultancy Service for Study on the Viability and Sustainability of the Plastic Waste Recycling Plant in Cox's Bazar, 2021</b>	
<p><b>Country :</b> Bangladesh  <b>Name of the Assignment:</b> Consultancy Service for Study on the Viability and Sustainability of the Plastic Waste Recycling Plant in Cox's Bazar, 2021</p> <p>Funded by: BRAC - Humanitarian Crisis Management Programme (HCMP)</p> <p><b>Location: Cox's Bazar, Bangladesh</b></p>	<p><b>Duration of assignment:</b>  <b>Status:</b> Completed</p>
<p><b>Name of Client:</b> BRAC - Humanitarian Crisis Management Programme (HCMP)</p>	<p><b>Professional Experts/Staff provided by Your Organization:</b>                  No. of Expert: 6, No of person-Months:2</p>
<p><b>Start Date (Month/Year):</b> March, 2021</p>	<p><b>Completion Date: (Month/Year):</b> May, 2021</p>
<p><b>Objectives of the Project:</b></p> <ul style="list-style-type: none"> <li>• Submission of Analysis report Testing soil and water for assessing environmental effect/impact along with desk review of previous research.</li> <li>• Identifying the emissions with hazardous components of the existing plants</li> <li>• Explore markets in cox's Bazar or outside Cox's Bazar to collect information to</li> <li>• establish linkage with production and market</li> <li>• Review of any report/documents related to Waste Plastic recycling issue from home and abroad.</li> <li>• Technical assessment report along with the recommendations.</li> <li>• Recommendation on up gradation of the recycling plant.</li> <li>• Environmental assessment report</li> <li>• Business development plan with recommendations of existing plastic waste recycling plant and new ideas.</li> </ul>	
<p><b>Detail Description of Actual Services will be provided by CC's Experts and Staff:</b>                  The main activities in the project included;</p> <ul style="list-style-type: none"> <li>• Analyze the cost-effectiveness of the existing plants (Both Capital, Operation and Maintenance cost) in the camp (Camp 15, Camp 7, Camp 8W) and assessing the capacity of the plant including unit operation cost and recycled item cost.</li> <li>• Testing soil and water for assessing environmental effect/impact along with desk review of previous research.</li> <li>• Identifying the emissions with hazardous components of the existing plants</li> <li>• KII, IDI, FGD and observation as qualitative data collection tools.</li> <li>• Explore markets in cox's Bazar or outside Cox's Bazar to collect information to</li> <li>• establish linkage with production and market</li> <li>• Review of any report/documents related to Waste Plastic recycling issue from home and abroad.</li> <li>• Technical assessment report along with the recommendations.</li> <li>• Recommendation on up gradation of the recycling plant.</li> </ul>	

**Project 7**

<b>Name of the Project: Feasibility Study and drafting of a Project Commitment Note (NEP) under Capacity building to reduce lead contamination in Bangladesh project</b>	
<b>Country:</b> Bangladesh	<b>Duration of assignment:</b>

<b>Name of the Assignment:</b>  Funded by: The French Global Environment Fund (FFEM)  <b>Location: Bangladesh</b>	<b>Status:</b> Completed
<b>Name of Client:</b>	<b>Professional Experts/Staff provided by Your Organization:</b> No. of Expert: 2, No of person-Months: 3
<b>Start Date (Month/Year) : Dec, 2021</b>	<b>Completion Date(Month/Year): March, 2022</b>
<b>Objectives of the Project:</b> <ul style="list-style-type: none"> <li>Pay particular attention, among other things, to the elements that gave rise to comments from the Scientific and Technical Committee, the Secretariat and the FFEM Steering Committee during the project identification phase; A detailed, realistic provisional schedule for the duration of the project</li> <li>A proposal for a Project monitors and evaluation system, based on solid, clearly predefined indicators, specifying its articulation with other existing monitoring and evaluation systems. In addition, in order to prepare the drafting of the NEP, the Consultant will have to deal with the following points:</li> <li>Revise and deepen the logical framework of the entire project and define precisely the project monitoring indicators;</li> </ul>	
<b>Detail Description of Actual Services will be provided by CC's Experts and Staff:</b> The main activities in the project included; <ul style="list-style-type: none"> <li>Define the critical assumptions for the success of the project and the conditions for its sustainability and scaling up;</li> <li>Evaluate the main risks of the project and explain how the project will be adapted to take into account and or better manage these risks:</li> <li>Propose a categorization of the project according to the Environmental and Social analysis grid and the methodological description provided in the appendix (categorization by criterion identifying the risks or uncertainties, then attribution of an overall categorization to the project)</li> <li>Update and specify the amount of the various financial contributions announced, their points of application and their respective timetables, with a view to coordination and harmonization between partners.</li> </ul>	

**Project 8**

<b>Name of the Project: Consultancy contract for furnishing documents on capacity needs assessment of three municipalities</b>	
<b>Country:</b> Bangladesh <b>Name of the Assignment:</b>  Funded by: <b>Practical Action, Bangladesh</b>  <b>Location: Bangladesh</b>	<b>Duration of assignment:</b> <b>Status:</b> Completed
<b>Name of Client: Practical Action, Bangladesh</b>	<b>Professional Experts/Staff provided by Your Organization:</b> No. of Expert: 2, No of person-Months: 1
<b>Start Date (Month/Year): March, 2020</b>	<b>Completion Date (Month/Year): May, 2020</b>
<b>Objectives of the Project:</b> <ul style="list-style-type: none"> <li>Developed semi-structured questionnaire and guideline for data collection and conduct pretesting in line with the existing report</li> <li>Orientation of enumerators on WASH SDG project, identify the secondary data source and sample size for data collection Conducted FGDs of dwellers (including low-income settlement),</li> </ul>	

municipalities, farmers, informal pit

- emptier, waste and sanitation workers, fertilizer dealers, organic compost producers, urban and peri urban farmers, homestead gardeners, vegetable vendors (organic and traditional) and scrap suppliers highlighting the use of compost, food production and urban agriculture pattern, local energy (fuel) market, sanitation value chain and waste collection and management pattern
- Conducted KII of municipality mayor, representative of DAE and DPHE and several FGDs with the members of Town Level Coordination Committees (TLCC), municipal officials (secretary, engineers, account officer, slum development officer and conservancy inspectors), civil society representatives (building owners, businessman, teachers etc.) Scoping analysis of local market focusing on use of biogas and charcoal as fuel, back yard gardeners,
- rooftop gardeners, nursery owners, use of organic compost as fertilizer, reusing and recycling of plastic materials, solid waste collection pattern and segregation of organic and inorganic waste from user as well as from service providers" perspective analyzed qualitative and quantitative information regarding existing WASH entrepreneurs including solid
- waste and pit emptying, sanitation value chain system, municipality's waste management capacity, landfill, urban agriculture, energy and compost market scenario identify the gaps in implementing city sanitation and resilience services considering the local context
- Conducted a sharing session with key personnel of Practical Action

**Detail Description of Actual Services will be provided by CC's Experts and Staff:**

The main activities in the project included;

- Developed semi-structured questionnaire and guideline for data collection and conduct pretesting in line with the existing report
- Orientation of enumerators on WASH SDG project, identify the secondary data source and sample size for data collection conducted FGDs of dwellers (including low-income settlement), municipalities, farmers, informal pit
- emptier, waste and sanitation workers, fertilizer dealers, organic compost producers, urban and peri urban farmers, homestead gardeners, vegetable vendors (organic and traditional) and scrap suppliers highlighting the use of compost, food production and urban agriculture pattern, local energy (fuel) market, sanitation value chain and waste collection and management pattern
- Conducted KII of municipality mayor, representative of DAE and DPHE and several FGDs with the members of Town Level Coordination Committees (TLCC), municipal officials (secretary, engineers, account officer, slum development officer and conservancy inspectors), civil society representatives (building owners, businessman, teachers etc.) Scoping analysis of local market focusing on use of biogas and charcoal as fuel, back yard gardeners.

**Project 9**

<b>Name of the Project: Consultancy for Solid waste management (SWM) Feasibility Study in Cox's Bazar camps</b>	
<p><b>Country:</b> Bangladesh</p> <p><b>Name of the Assignment:</b> Consultancy for Solid waste management (SWM) Feasibility Study in Cox's Bazar camps</p> <p>Funded by: Solidarities International</p> <p><b>Location:</b> Cox's Bazar, Bangladesh</p>	<p><b>Duration of assignment:</b></p> <p><b>Status:</b> Completed</p>
<p><b>Name of Client:</b> Solidarities International</p>	<p><b>Professional Experts/Staff provided by Your Organization:</b></p> <p>No. of Expert: 2, No of person-Months: 1</p>
<p><b>Start Date (Month/Year):</b> Sep 2021</p>	<p><b>Completion Date (Month/Year):</b> Nov 2021</p>
<p><b>Objectives of the Project:</b></p> <ul style="list-style-type: none"> <li>• Characterization (quantity and quality) of the solid waste produced by WFP as well as waste collected by WFP from drains.</li> <li>• Study about the existing waste management chains in Cox's Bazar District of those specific types of waste</li> <li>• Identified through the characterization. Provide recommendations on how the two WFP projects</li> </ul>	

(SMEP and Self-Resilience project) can be

- integrated and enhance to existing waste management chains. Investigate how WFP can make construction process greener through innovative solutions

**Detail Description of Actual Services will be provided by CC’s Experts and Staff:**

The main activities in the project included;

- Characterization (quantity and quality) of the solid waste produced by WFP as well as waste collected by WFP from drains.
- Study about the existing waste management chains in Cox’s Bazar District of those specific types of waste
- Identified through the characterization. Provide recommendations on how the two WFP projects (SMEP and Self-Resilience project) can be
- Integrated and enhance to existing waste management chains. Investigate how WFP can make construction process greener through innovative solutions.
- Make report and submit

**Project 10**

<b>Name of the Project: Field Work and Case Study data collection for Solid Waste Management Outlook, also termed as Poor Peoples Waste Outlook – PPWO</b>	
<p><b>Country:</b> Bangladesh  <b>Name of the Assignment:</b> Field Work and Case Study data collection for Solid Waste Management Outlook, also termed as Poor Peoples Waste Outlook – PPWO</p> <p>Funded by: Practical Action</p> <p><b>Location:</b> Bangladesh,</p>	<p><b>Duration of assignment:</b>  <b>Status:</b> Completed</p>
<p><b>Name of Client:</b> Practical Action, Bangladesh,</p>	<p><b>Professional Experts/Staff provided by Your Organization:</b>                  No. of Expert: 2, No of person-Months: 2</p>
<p><b>Start Date (Month/Year):</b> Oct, 2020</p>	<p><b>Completion Date (Month/Year):</b> Jan, 2021</p>
<p><b>Objectives of the Project:</b></p> <ul style="list-style-type: none"> <li>The waste management services household’s access. The actors involved in this process, especially in the informal sector, with a gender lens.</li> <li>Estimated volumes and composition of waste generated, collected, and disposed/recycled, Waste</li> <li>Composition and Quantification and the types of waste collection service and treatment available. The negative impacts of failed waste management structures in a community.</li> </ul>	
<p><b>Objectives of the Project:</b></p> <ul style="list-style-type: none"> <li>Focus the waste management services household's access. The actors involved in this process, especially in the informal sector, with a gender lens.</li> <li>Estimated volumes and composition of waste generated, collected, and disposed/recycled, Waste</li> <li>Composition and Quantification and the types of waste collection service and treatment available. The negative impacts of failed waste management structures in a community.</li> <li>Assist Practical Action to publish Poor People Waste Outlook</li> </ul>	

**Project 11**

<b>Name of the Project: Feasibility Study for Development of an Integrated and Sustainable Community Based Waste Management Program</b>
---

<b>Country:</b> Bangladesh <b>Name of the Assignment:</b>  Funded by: OXFAM/Community Development Center (CODEC)  <b>Location:</b> Patuakhali Municipality, Bangladesh	<b>Duration of assignment:</b> <b>Status:</b> Completed
<b>Name of Client:</b> OXFAM/Community Development Center (CODEC)	<b>Professional Experts/Staff provided by Your Organization:</b> No. of Expert: 2, No of person-Months: 1
<b>Start Date (Month/Year):</b> Dec, 2019	<b>Completion Date (Month/Year):</b> April, 2021
<b>Objectives of the Project:</b> <ul style="list-style-type: none"> <li>Conducted Feasibility Study (FS) along with developing associated due diligence compliance documents, Rapid Environmental Assessment (REA), Detailed Engineering Design (DED) of the Community-Led Project (CLP) on Solid Waste Management. Feasibility Study Report (FSR) which includes technical analysis of the project; technical alternative</li> <li>options analysis, whenever necessary; cost estimates; financial and economic analysis; climate, environmental, gender and social analysis; social economic assessment; and the legal, institutional and capacity needs assessment of the CLP along with the Rapid Environmental Assessment (REA) report and Detailed Engineering Design (DED). Preparation of Procurement Work Packages (PWP). Complete Procurement Work Packages (PWP) for the</li> <li>proposed project which includes the Bill of Material (BOM)/ Bill of Quantities (BOQ); project procurement plan/strategy; project construction phasing; the project construction quality inspection and monitoring plan</li> </ul>	
<b>Detail Description of Actual Services will be provided by CC's Experts and Staff:</b> The main activities in the project included; <ul style="list-style-type: none"> <li>Detailed Engineering Drawing, Design and Cost Estimate of the Compost Plant.</li> <li>Technical and Design Analysis.</li> <li>Environmental Assessment.</li> <li>Financial and Economic Analysis.</li> <li>Social and Market Study.</li> <li>Institutional and Organizational Study.</li> <li>Physical Composition of Solid Waste in the Municipalities.</li> <li>Waste Category and Waste Volume analysis.</li> </ul>	

**Project 12**

<b>Name of the Project:</b> ADB TA No. 7597- Nepal: Capacity Building for Waste Management	
<b>Country:</b> Nepal <b>Assignment Location:</b> Nepal Name of the assignment: Capacity Building of Waste Management Council (SWMC) and Solid Waste Management Technical Support Center (SWMTSC) of Nepal	<b>Duration of assignment:</b> 07(Seven) months <b>Status:</b> Completed
<b>Name of Client:</b> Asian Development Bank (ADB)	<b>Professional Experts/Staff provided by Your Organization:</b> No of Expert: 01 No of Staff: 0 No of person-Months: 7
<b>Start Date (Month/Year):</b> June, 2011	<b>Completion Date (Month/Year):</b> December, 2011
<b>Name of the Lead Consultant Firm, if any:</b> IPE Global (P) Ltd. India and Commitment Consultants	
<b>Position of the senior professional experts of your firm performed in the project:</b> Team Leader	
<b>Objectives of the Project:</b>	

Capacity Building of Waste Management Council (SWMC) and Solid Waste Management Technical Support Center (SWMTSC) for discharging their mandate as prescribed in the new Solid Waste Management Act. Specific outputs will include: (1) support for establishing the policy, regulatory, and institutional framework for SWM, including the operationalization of the SWMC and SWMTSC, and drafting of the national SWM policy and strategy; (2) support for capacity development of SWMC and SWMTSC; and (3) support for developing relevant issue-specific regulations, guidelines, and/or standards for improving SWM at the regional and local levels.

**Detail Description of Actual Services Provided by CC’s Experts and Staff:**

Commitment Consultants in association with IPE provided capacity development support to the Waste Management Council (SWMC) and Solid Waste Management Technical Support Center (SWMTSC) of Nepal for discharging their mandate as prescribed in the new Solid Waste Management Act. Specific outputs of the assignment included:

- Support for establishing the policy, regulatory, and institutional framework for SWM, including the operationalisation of the SWMC and SWMTSC, and drafting of the national SWM policy and strategy
- Support for capacity development of SWMC and SWMTSC
- Support for developing relevant issue-specific regulations, guidelines, and/or standards for improving SWM at the regional and local levels.
- Commitment Consultants provided its input in the assignment with expertise support of the Team Leader in the project.

**Project 13**

<b>Name of the Project: Bio-Gas plant by utilizing municipal solid waste at Faridpur.</b>	
<b>Country:</b> Bangladesh	<b>Duration of assignment:</b> Ongoing, but CC has completed its assignment from its part
<b>Assignment Location:</b> Faridpur, Bangladesh	<b>Status:</b> Completed
<b>Name of the assignment:</b> Design and Follow-up on the Biogas plant at Faridpur.	<b>Professional Experts/Staff provided by Your Organization:</b> No of Expert: 01 No of Staff: 10 No of person-months: 18
<b>Name of Client:</b> Urban dwellers of Faridpur Municipality	
<b>Start Date (Month/Year):</b> January 2010	<b>Completion Date (Month/Year):</b> December 2010
<b>Name of the associated Consultants, if any:</b> Practical Action Bangladesh (Implemented agency) and Commitment Consultants it’s associated partner.	
<b>Position of the senior professional experts of your firm performed in the project:</b> SWM Expert	
<b>Objectives of the Project:</b>  Solid waste is a burden for all municipalities and cities of Bangladesh. It is important to recycle the waste and transformed it to resources. Bangladesh is lack from adequate energy like biogas and electricity. Therefore, project has initiated a piloting to produce biogas from solid waste in an anaerobic method. Now, biogas is produced and supplied to the neighboring HHs. Organic fertilizer is also produced in the project as a bi-product.	
<b>Detail Description of Actual Services Provided by CC’s Experts and Staff:</b> Practical Action Bangladesh installed a bio gas plant in a District town of Bangladesh, Faridpur. Commitment Consultants provided the support with design and Follow-up in installing the biogas plant. The physical Work completed and biogas production started.	

**Project 14**

<b>Name of the Project:</b> Development of participatory solid waste management training manuals for community volunteers and private sector service providers.	
<b>Country:</b> Bangladesh  <b>Assignment Location:</b> Dhaka, Bangladesh	<b>Duration of assignment:</b> 12(twelve) months <b>Status:</b> Completed
<b>Name of Client:</b> JICA (Japan International Cooperation Agency) Study Team for DCC	<b>Professional Experts/Staff provided by Your Organization:</b> No of Expert: 01 No of Staff: 05 No of person-Months: 12
<b>Start Date (Month/Year):</b> February, 2008	<b>Completion Date (Month/Year):</b> January, 2009
<b>Position of the senior professional experts of your firm performed in the project:</b> Project Coordinator	
<b>Objectives of the Project:</b>  JICA has been assisting Dhaka City Corporation (DCC) to improve its solid waste management services. As part of this effort, JICA and DCC felt the need to incorporate community members and private sector service providers into the program for better service delivery. It was observed that they hardly had any training on solid waste management. JICA contracted Commitment Consultants to develop required training manuals.	
<b>Detail Description of Actual Services Provided by CC's Experts and Staff:</b>  Commitment Consultants developed two sets of training manuals: one was for community volunteers and another one was for private sector service providers.  <ul style="list-style-type: none"> <li>All required background materials were collected and reviewed.</li> <li>The training manuals were developed through a participatory process. Consultations were held with all relevant stakeholders at different stages before finalizing the documents. Both English and Bangla versions were developed. Finally the manuals was tested in a full-day training session with necessary feedback</li> </ul>	

**Project 15**

<b>Name of the Project:</b> Tariff study on ICI (Industrial, Commercial and Institutional) waste	
<b>Country:</b> Bangladesh  <b>Assignment Location:</b> Dhaka City, Bangladesh	<b>Duration of assignment:</b> 10 (ten) months <b>Status:</b> Completed
<b>Name of the assignment:</b> Tariff study on ICI (Industrial, Commercial and Institutional) waste  <b>Name of Client:</b> Development Bank (ADB) consulting team	<b>Professional Experts/Staff provided by Your Organization:</b> No of Expert: 0 No of field enumerators and staffs: 08 No of person-Months: 10
<b>Start Date (Month/Year):</b> January, 2008	<b>Completion Date (Month/Year):</b> October, 2008

<b>Position of the senior professional experts of your firm performed in the project:</b> Project in charge	
<b>Objectives of the Project:</b>  It has been observed that ICI (institutional, commercial and industrial) waste generator is producing huge quantity of waste in comparison with the domestic waste producer. CC has been asked to conduct a study in the specific areas of Dhaka city to assess the taxpaying status of Dhaka city dwellers in residential and commercial buildings. So, CC provided necessary guideline to DCC about the potential of enhancing the tax from ICI institutions and establishments.	
<b>Detail Description of Actual Services Provided by CC's experts and staff:</b>  Commitment Consultants conducted a study titled 'Tariff study on ICI waste in DCC area'. The experts and staffs of CC visited the various industrial, commercial and institutional organisations that generate waste to understand the tariff pattern and structure of the respondents. All the data were then analysed and a final report was submitted to the ADB consulting team.	

### WATER, SANITATION & HYGIENE (WASH)

#### **Project 16**

<b>Name of the Project: School Census and Consumer Research on Behavior Change Communication on Sanitation practice in Secondary School under Khulna City Corporation</b>	
<b>Country:</b> Bangladesh <b>Name of the Assignment:</b> "School Census and Consumer Research on Behavior Change Communication on Sanitation practice in Secondary School under Khulna City Corporation" <b>Assignment Location:</b> Khulna City Corporation	<b>Duration of assignment:</b> 03 (three) months <b>Status:</b> Completed
<b>Name of Client:</b> SNV Netherlands	<b>Professional Experts/Staff provided by Your Organization:</b> No. of Expert: 05, No of Staff: 07, No of person-Months: 22
<b>Start Date (Month/Year):</b> October, 2018	<b>Completion Date (Month/Year):</b> August, 2019
<b>Objectives of the Project:</b> <ul style="list-style-type: none"> <li>• To define significant behaviors, census data will use to finalize the behaviors for the mentioned consumer research through a consultation meeting;</li> <li>• To understand the behavioral determinants of selected focus sanitation behaviors for the target group (Secondary School management committee) in terms of opportunity, ability and motivations;</li> <li>• To prioritize those behavioral determinants that there is opportunity and scope to change through behavior change communication to improve school sanitation sustainability of outcomes.</li> </ul>	
<b>Detail Description of Actual Services Provided by CC's Experts and Staff:</b> The main activities in the project included; <ul style="list-style-type: none"> <li>• Develop school census on sanitation practice</li> <li>• Conduct formative research</li> <li>• BCC Guideline preparation</li> <li>• Prepare constructive report to guide for preparing practical BCC strategy</li> <li>• Conduct validation workshop</li> </ul>	

**Project 17**

<b>Name of the Project: City Wide PPP led Integrated Faecal Sludge and Solid Waste Management for improving water security and inclusive green growth</b>	
<b>Country:</b> Bangladesh  <b>Name of the assignment:</b> " Baseline Study on City Wide PPP led Integrated Faecal Sludge and Solid Waste Management for improving water security and inclusive green growth"  <b>Assignment Location:</b> Satkhira and Gaibandha Municipality	<b>Duration of assignment:</b> 45days <b>Status:</b> Completed
<b>Name of Client:</b> Practical Action Bangladesh	<b>Professional Experts/Staff provided by Your Organization:</b> No. of Expert: 02 No of Staff: 02 No of Person-Months: 02
<b>Start Date (Month/Year):</b> October 2017	<b>Completion Date (Month/Year):</b> December 2017
<b>Main objectives of the assignment were:</b> To explore existing socioeconomic and demographic information of the city dwellers including low income settlements of Satkhira and Gaibandha municipalities; To assess the situation or extent of problem facing for waste and sludge management including the total generation, efficiency of collection/emptying, temporary storage/dumping, transportation, treatment and disposal; To assess the environmental impact specially the quality of surface and ground water and generation of greenhouse gases from the unsafe and untreated disposal and also to assess the working conditions and health impact on waste and sanitation workers; To assess Knowledge, attitude and practice of household member, commercial and institutional consumers regarding safe storage, delivery and disposal of waste and sludge, To assess willingness and ability to pay by the household, institutions for improve waste and sludge management services, To assess the market including demand, supply and gaps of Waste and Sludge Recycled Products (Biogas and Organic fertilizer), To analyze annual financial data including annual cost and revenues of the waste and sludge management system to assess the level and distribution of subsidy.	
<b>Detail Description of Actual Services Provide by CC's Experts/Staff:</b> <ul style="list-style-type: none"> <li>• Reviewing the project docs</li> <li>• Data tools development for qualitative and quantitative study</li> <li>• Conduct HH survey, KII, FGD, IDI, case study, etc.</li> <li>• Draft Baseline report</li> <li>• Submission of Final Report</li> </ul>	

**Project 18**

<b>Name of the Project: "Sustainability Assessment (SAF II) of South Asia WASH Results Programme" (SAWRP) in Bangladesh"</b>	
<b>Country:</b> Bangladesh  <b>Name of the Assignment:</b> Sustainability Assessment (SAF II) of South Asia WASH Results Programme	<b>Duration of assignment:</b> 03 months <b>Status:</b> Completed
<b>Name of Client:</b> Plan International Bangladesh	<b>Professional Experts/Staff provided by Your Organization:</b> No. of Expert: 02 No of Staff: 02 No of Person-Months: 02
<b>Start Date (Month/Year):</b> August 30, 2017	<b>Completion Date (Month/Year):</b> November 30, 2017

**Main objectives of the assignment were:**

Following points are the main objectives of the second round of SAF study(SAF II), which will be covering all three thematic areas (I&F, E&I and environmental aspects):

- Progress on addressing management responses and recommendations from the SAF I reports, summarizing specific actions taken, what remains to be done and what aspects are best left to other stakeholders.
- Revisiting RAG and risk ratings – review the RAG ratings from SAF II and highlight the changing trends (both improvements and challenges)
- A summary analysis of key lessons from the project in terms of addressing key risks and detailing what has worked well and not so well.
- Draft case studies related to three thematic areas of SAF. These could potentially address: progress on addressing difficult challenges, innovations, new or revised project processes, or discussing successful interventions.

**Detail Description of Actual Services Provided by CC’s Experts/Staff:**

- Preparatory meeting and Discussions
- Desk review of SAFI reports and other documents and submission of inception report
- Field visit/interview with the key stakeholders
- Drafting consolidated ‘Sustainability Assessment Framework’ report
- Joint discussion meeting, review and dissemination
- Submission of Final SAF II Sustainability Assessment Report

**Project 19**

<b>Name of the Project: “Drinking Water for Mongla”(1) and “Feasibility Study for potential Scale-Up Project” (2)</b>	
<p><b>Country:</b> Bangladesh  <b>Name of the Assignment:</b> Evaluation of the Project “Drinking Water for Mongla”(1) and “Feasibility Study for potential Scale-Up Project” (2)  <b>Location:</b> Mongla, Bagerhat, Bangladesh</p>	<p><b>Duration of assignment:</b> 03 months  <b>Status:</b> Completed</p>
<p><b>Name of Client:</b> Caritas, Bangladesh</p>	<p><b>Professional Experts/Staff provided by Your Organization:</b></p> <p>No of Expert: 04                  Staff: 01                  No of person-months: 02</p>
<p><b>Start Date (Month/Year):</b> May 2015</p>	<p><b>Completion Date (Month/Year):</b> July 2015</p>
<p><b>Objectives of the Project:</b></p> <p>The overall objective of Mongla project is to provide access to safe drinking water for disadvantaged vulnerable community households (about 4000 families) in the South of Bangladesh (Mongla). The key element for the feasibility study to scale up the Mongla project would be to conduct a needs analysis to understand the present and future needs. Water test (Chlorine) and Different methods were used for quantities and qualitative data collection, FGD, KII. The sample size was 50 respondents.</p>	
<p><b>Detail Description of Actual Services Provided by CC’s Experts /Staff:</b></p> <p>Commitment Consultants is conducting a study titled Evaluation of the Project “Drinking Water for Mongla“ (1) And Feasibility Study for potential Scale-Up Project (2). The main activities are include: Designing the study (survey instrument preparation &amp; piloting), Overall quality, quantitative survey, FGDs and Key Informant Interviews, Quality Assurance of the Entire Survey Process including coding, encoding, and analysis, Designing the data analysis frame work, Facilitation of and presentation at two coordination workshops, Water test Assess feasibility for scaling up of the project, and in the case of project feasibility develop a business plan including Budget (Market analysis, Organization and management, Service/Product line, Marketing and sales, and Financials).</p>	

**Project 20**

<b>Name of the Project: “Institutional and Financial Sustainability Assessment of South Asia WASH Results Programme”</b>	
<b>Country:</b> Bangladesh  <b>Name of the Assignment:</b> Institutional and Financial Sustainability Assessment of South Asia WASH Results Programme. <b>Assignment Location:</b> Barguna, Gaibandha, Sreepur	<b>Duration of assignment:</b> 03 months <b>Status:</b> Completed
<b>Name of Client:</b> Plan International Bangladesh	<b>Professional Experts/Staff provided by Your Organization:</b> No. of Expert: 02 No of Staff: 02 No of Person-Months: 02
<b>Start Date (Month/Year):</b> April 2016	<b>Completion Date: (Month/Year):</b> June 2016
<p><b>Main objectives of the assignment were:</b> The objective of this institutional and financial assessment is to contribute to longer term sustainability of SAWRP and to review appropriate interventions to achieve program outcomes. The expected outcomes are (1) the sustained use of sanitation and water supply facilities, and (2) sustained hand-washing practices.</p> <p><b>Main focus area of the assessment was:</b></p> <ul style="list-style-type: none"> <li>• To undertake an institutional assessment using in the overall assessment steps set out in section 2 of the framework document (where are we now, where we want to be etc.).</li> <li>• Assess progress on the institutional and financial interventions during the outputs phase, and review the plans for the outcomes phase, including plans for advocacy (2016 to 2018). Typical current proposed interventions are set out in the next section.</li> <li>• To review the assessment questions set out in Table 3 to 5 in the sustainability assessment framework (SAF) to ensure they are appropriate.</li> <li>• Where feasible, determine RAG ratings against the assessment questions in Table 3 to 5 in the framework, based on project performance in the output phase, to highlight any areas of concern, with justifications.</li> <li>• Furnish at least four case studies on institutional and financial sustainability based on field visits and desk review.</li> <li>• Prepare a Summary of key findings and recommendations based on the assessments.</li> </ul>	
<p><b>Detail Description of Actual Services Provided by CC’s Experts/Staff:</b></p> <ul style="list-style-type: none"> <li>• Desk Review</li> <li>• Field Assessment/observation</li> <li>• Develop research questions for Assessment</li> <li>• Overview of SAWRP</li> <li>• Addressing of Institutional Issues</li> <li>• Analysis of Findings from Desk review and Field observation</li> <li>• Put Recommendations</li> <li>• Submission of Analysis report</li> </ul>	

**Project 21**

<b>Name of the Project: Stunting Free Villages: Impact Monitoring of WASH Service Outcomes.</b>	
<b>Country:</b> Bangladesh <b>Name of the Assignment:</b> “Stunting Free Villages: Impact Monitoring of WASH Service Outcomes” <b>Assignment Location:</b> Patuakhali, Barisal, Bangladesh	<b>Duration of assignment:</b> 25 (twenty-five) months <b>Status:</b> Completed
<b>Name of Client:</b> Max Foundation, Netherlands	<b>Professional Experts/Staff provided by Your Organization:</b>

	No. of Expert: 08, No of Staff: 04, No of person-Months: 22
<b>Start Date (Month/Year):</b> March 2015	<b>Completion Date: (Month/Year):</b> March 2017
<p><b>Objectives of the Project:</b>                  Bangladesh has been successful in increasing access to basic water &amp; sanitation facilities, the malnutrition rates in Bangladesh are amongst the highest in the world. The enigma of nutritional impact not necessarily being correlated with improved access to WASH, or income, or food production is a subject of grave concern. This concept note proposes to undertake action research on the effectiveness of mobilizing communities to achieve “stunting free village” status. Central to this initiative is the recognition that parents are the principal researchers (PR) in child growth monitoring against targeted fecal-oral (and other nutritional) actions to eradicate the incidence of stunting. Project objective are: 1) To trigger a demand for eradicating stunting; 2) To enable households to innovate and practice behaviors individually and collectively as principal researchers to achieve stunting free village status; 3) To identify and record behaviors and impacts leading to stunting free village status.</p>	
<p><b>Detail Description of Actual Services Provided by CC’s Experts and Staff:</b> Commitment Consultants conducted an Action Research titled “Stunting Free Villages: Impact Monitoring of WASH Service Outcomes”. The main activities in the project included;</p> <ul style="list-style-type: none"> <li>• Developed the ‘stunting free village’ approach</li> <li>• Developed participatory implementation tools</li> <li>• Developed mobile growth monitoring application</li> <li>• Training of 2 PNGOs on the approach</li> <li>• Growth monitoring data collation and analysis</li> <li>• Mobile monitoring feedback &amp; field support</li> <li>• Best practice workshop for PNGOs/communities</li> <li>• Revise implementation to include best practices</li> <li>• Key ingredients that deliver nutritional impact</li> <li>• Summaries of the stunting free village approach</li> <li>• Final report of the action research</li> </ul>	

**Project 22**

<b>Name of the Project: Development of Strategic Sanitation Plan for Mirpur, Dhaka</b>	
<p><b>Country:</b> Bangladesh</p> <p><b>Name of the Assignment:</b> Evaluate of technical options and Present financial assessment for sanitation options in the project areas.</p> <p><b>Assignment Location:</b> Dhaka, Bangladesh</p>	<p><b>Duration of assignment:</b> 06 (Six) months</p> <p><b>Status:</b> Completed</p>
<p><b>Name of Client:</b> WSUP, UK.</p>	<p><b>Staff provided by Organization:</b>                  No of Experts: 06                  No of Staff: 02                  No of Person-Months: 5</p>
<p><b>Start Date(Month/Year) :</b> July, 2011</p>	<p><b>Completion Date (Month/Year):</b> December, 2011</p>
<p><b>Position of the senior professional experts of your firm performed in the project:</b>                  SWM Expert</p>	
<p><b>Objectives of the Project:</b></p> <p>The main objectives of this assignment are: (1) To evaluate technical options and (2) Present financial assessment for sanitation options in the project areas (wards 2 and 11 in Mirpur, Dhaka). The cost estimate should include both capital costs and operational/maintenance costs.</p> <p>The sanitation scenarios to consider are (1) on-site sanitation, (2) conventional sewerage and wastewater treatment, and (3) simplified sewerage and wastewater treatment. Within (2) and (3), we are also to explore options of wastewater treatment when (a) the treatment plant is located in the</p>	

ward, (b) wastewater is carried to the Pagla treatment facility, and (c) wastewater is treated by a facility in Dasher kandi.

**Detail Description of Actual Services Provided by CC’s Experts and Staff:**

Commitment Consultants developed a strategic sanitation plan for 02 wards (2 and 11 in Mirpur) of DNCC. CC mainly evaluated Technical Options and Present Financial Assessment for sanitation options in the project areas.

The sanitation scenarios, which were considered in the plan were as follows:

On-site sanitation

Conventional sewerage and wastewater treatment

Simplified sewerage and wastewater treatment.

CC also explored options of wastewater treatment when (a) the treatment plant is located in the ward, (b) wastewater is carried to the Pagla treatment facility, and (c) wastewater is treated by a facility in Dasher kandi.

CC engaged number of reputed consultants for this assignment to develop a quality strategic sanitation panning

**Project 23**

<b>Name of the Project: Action Research on Ecological alternatives in sanitation in difficult areas of Bangladesh.</b>	
<b>Country:</b> Bangladesh	<b>Duration of assignment:</b> 17 (Seventeen) months
<b>Assignment Location:</b> Rangpur, Bangladesh	<b>Status:</b> Completed
<b>Name of the assignment:</b> Action Research on Ecological alternatives in sanitation in difficult areas of Bangladesh.	<b>Professional Experts/Staff provided by Your Organization:</b> No of Expert: 01  No of Staffs: 07 No of person-Months: 100
<b>Name of Client:</b> UNICEF and Urban slum dwellers are the beneficiaries	
<b>Start Date (Month/Year):</b> September,2009	<b>Completion Date (Month/Year):</b> January, 2011
<b>Name of the associated Consultants, if any:</b> Practical Action Bangladesh and Commitment Consultants	
<b>Position of the senior professional experts of your firm performed in the project:</b> Policy and Advocacy Expert	
<b>Objectives of the Project:</b>  UNICEF assigned a consortium of four organizations to review and design different ecological toilet options appropriate for geo-hydrological, physical, cultural, and social context of difficult areas. Commitment Consultants is one of the member of the consortium and taken the responsibilities of providing the mentioned services to the slum areas of Rangpur Pourashava. It constructed household eco-toilets, build capacity of the local mason, local level DPHE and Pourashava engineers on construction and O&M of eco-toilets, aware the community on the use and maintenance of eco-toilets including the use of sanitized human excreta, establish linkage with fertilizer company/agricultural extension services for utilization of human excreta in agricultural farming, facilitate networking with different Government and NGOs for promoting ecological sanitation and knowledge sharing, etc.	
<b>Detail Description of Actual Services Provided by CC’s Experts and Staff:</b>	
Commitment Consultants in association with Practical Action Bangladesh conducted an Action	

Research on the said project. CC was responsible for Rangpur pourashava. The main activities were undertaken as follows:

- Baseline survey
  - Stakeholder’s meeting
  - Formation of local committee
  - Identified the users of Eco toilets
- Motivational program and construction of Eco-toilets etc. A total number of 26 toilets with 4 options including low-cost eco-toilet constructed at selective four clusters of Rangpur Pourashava.

### HEALTH AND NUTRITION

#### **Project 24**

<b>Name of the Assignment: “Baseline Survey of Improving Health and Nutrition Status of Urban Extreme Poor in Bangladesh”</b>	
<b>Country:</b> Bangladesh <b>Name of the Project:</b> Sustainable Health Service Provision Project <b>Assignment Location:</b> Dhaka North City Corporation, Dhaka South City Corporation, Chittagong City Corporation and Mymensingh Municipality	<b>Duration of assignment:</b> 90 days <b>Status:</b> Completed
<b>Name of Client:</b> Concern Worldwide, Bangladesh	<b>Professional Experts/Staff provided by Your Organization:</b> No. of Expert: 03 No. of management staff: 02 No. of field staffs: 17
<b>Start Date (Month/Year):</b> July 2017	<b>Completion Date (Month/Year):</b> Oct 2017
<b>Objectives of the Evaluation are as follows:</b> <ul style="list-style-type: none"> <li>• The overall objective of the baseline study is to understand the current status of health and nutrition situation of the target group and the capacity and quality of the health and nutrition service delivery mechanism in urban areas.</li> <li>• The specific objectives of the survey are to collect information of the baseline situation of the indicators proposed in the project logical framework to measure the success of the programme. The study results will be used to review and revise the target of the indicators. In addition, the result of the baseline survey will be shared with relevant stakeholders for evidence-based advocacy.</li> </ul>	
<b>Detail Description of Actual Services Provided by CC’s experts:</b> <ul style="list-style-type: none"> <li>• Set an effective methodology to conduct the study based on the indicators proposed in the logical framework of the project.</li> <li>• Developed an appropriate data collection tool with the M&amp;E unit of Concern, conduct field testing of the tools and finalize the tools in line with the Result Framework of the program to captured disaggregated by gender and living conditions (pavements /squatter /undeveloped slums) of the program participants.</li> <li>• Used software and Tabs for Digital Data Gathering (DDG) applying standard indicators and tools for data collection by involving the MoH&amp;FW and Health Departments of City Corporations/Municipality, BRAC and all key service providers in four program locations.</li> <li>• Analyze data with consultation of Concern’s M&amp;E unit</li> <li>• Prepare and submit draft report following the template of Concern Worldwide</li> <li>• Share the key findings of the baseline report in a formal workshop, and</li> <li>• Prepare the final report incorporating the feedback.</li> </ul>	

**Project 25**

<b>Name of the Assignment: “Evaluation of Reproductive and Child Health Development Project (RCHDP)”</b>	
<b>Country:</b> Bangladesh  <b>Name of the Project:</b> Reproductive and Child Health Development Project (RCHDP) <b>Assignment Location:</b> Rajshahi, Mymensingh and Chittagong	<b>Duration of assignment:</b> 30 days <b>Status:</b> Completed
<b>Name of Client:</b> Caritas Bangladesh	<b>Professional Experts/Staff provided by Your Organization:</b> No. of Expert: 01 No. of management staff: 01
<b>Start Date (Month/Year):</b> May, 2017	<b>Completion Date (Month/Year):</b> June, 2017
<b>Position of the senior professional experts of your firm performed in the project:</b> National Consultant	
<b>Objectives of the Evaluation are as follows:</b> <ul style="list-style-type: none"> <li>To assess how far the objectives (outcomes) of the project have been achieved and compare with the stated objectives and indicators in the contract with Misereor too.</li> <li>To assess the further outcomes and impacts in terms of positive and negative changes by the project.</li> <li>To assess the efficiency of the project in terms of qualitative and quantitative outputs to the inputs.</li> <li>To assess the effectiveness of the strategy and approaches adopted for implementation of the project</li> <li>To assess collaboration between RCHDP, and other relevant NGOs/Government Organizations (GOs)</li> <li>To assess the extent of participation in the implementation of different stakeholders.</li> <li>To assess in how far the project approaches used are supporting ownership and sustainability.</li> <li>To specify the learning of the project and make recommendations on the basis of the findings.</li> </ul>	
<b>Detail Description of Actual Services Provided by CC’s experts:</b> <ul style="list-style-type: none"> <li>Kick-off meeting in Aachen with Misereor and the Team Leader</li> <li>Analysis of project documents (desk study: proposals, contracts, reports).</li> <li>Briefing meeting with all partners. Evaluation covered 03 Upazilas under o3 districts, i.e. Rajshahi (Godagari), Mymensingh and Chittagong (Rangunia Upazila)</li> <li>Submission of draft and final Evaluation report</li> </ul>	

**Project 26**

<b>Name of the Project: Urban Public and Environmental Health Sector Development Project (UPEHSDP)</b>	
<b>Country:</b> Bangladesh <b>Name of the Assignment:</b> Program Support Consultancy (PSC) of Urban Public and Environmental Health Sector Development Project (UPEHSDP)	<b>Duration of assignment:</b> 50 (Fifty) months <b>Assignment Location:</b> Dhaka, Chittagong, Rajshahi, Khulna, Sylhet and Barisal. (Seven City Corporation of Bangladesh) <b>Status:</b> Completed
<b>Name of Client:</b> Government of Bangladesh (GOB) and Asian Development Bank (ADB)	<b>Professional Experts/Staff provided by Your Organization:</b> No. of Expert: 02 No of person-Months: 28 No. of staffs – 20 person months
<b>Start Date (Month/Year):</b> October, 2012	<b>Completion Date (Month/Year):</b> June, 2017

<b>Name of the associated Consultants, if any:</b> IPE Global (Pvt.) Ltd. & Commitment Consultants, Bangladesh
<b>Position of the senior professional experts of your firm performed in the project:</b> <ul style="list-style-type: none"> <li>Urban Public and Environmental Health (UPEH) Program Reform Expert (International)</li> <li>Behaviour Change Communications (BCC)/Community Participation Specialist</li> </ul>
<b>Objectives of the Project:</b> The overall objective of Urban Public and Environmental Health Sector Development Program (UPEHSDP) is to improve the public and environmental health conditions in the urban areas of Bangladesh. The ensuing program will improve the health status of the citizen and poor community in urban areas and help the country to make progress on the Millennium Development Goals (MDGs) relating to child and maternal health care communicable diseases (MDGs 4, 5, and 6); and improve urban sanitation (MDG7). Municipal solid waste management (SWM) in these cities are deficient in all components i.e. source segregation, primary collection, waste treatment, scientific disposal of waste, etc. The existing SWM also lack adequate MSW infrastructure facilities to meet the norms stipulated in The Local Government (Pourashava) Act, 2009.
<b>Detail Description of Actual Services Provided by CC's Experts and Staff:</b> <ul style="list-style-type: none"> <li>Assist UPEHU to implement the following policy reform areas of the program: (a) strengthening institutional arrangements; (b) improving urban and environmental health public service delivery and (c) strengthening governance and management; Review existing policies and programs for urban public and environmental health; prepare and promulgate a national policy framework and guideline for solid waste management and sanitary slaughter houses, including strategies, activities, programs and policies for managing solid waste management and food safety;</li> <li>Review the proposed system for solid and medical waste collection, transfer and disposal; food and water safety and hygiene; supervise implementation of the reforms;</li> <li>Assist LGD and MOEF develop a national solid waste management strategy, and prepare action plans for solid waste management;</li> <li>Assist LGD and city corporations in the development of policies related to municipal and solid waste management, medical waste management, and food safety;</li> <li>Develop and conduct various training program for the city corporation and project staffs</li> <li>Develop BCC strategy and number of BCC materials (printing leaflet, calendar, sticker, etc.)</li> <li>Develop 3R documentary and training module, etc.</li> </ul>

**Project 27**

<b>Name of the Project: Bangladesh Health, Nutrition and Population Sector Program (HNPS)</b>	
<b>Country:</b> Bangladesh	<b>Duration of assignment:</b> 10(ten) months <b>Status:</b> Completed
<b>Assignment Location:</b> All over Bangladesh	
<b>Name of the assignment:</b> Performance evaluation of civil works investment of Bangladesh Health Nutrition and Population Sector Program (HNPS)  <b>Name of Client:</b> Ministry of Health and Family welfare and World Bank	<b>Professional Experts/Staff provided by Your Organization:</b> No of Expert: 01 No of Staff: 09 No of person-Months: 10
<b>Start Date (Month/Year):</b> January, 2011	<b>Completion Date (Month/Year):</b> October, 2011
<b>Name of the Lead Consultant Firm, if any:</b> Commitment Consultants, IPE Global (P) Ltd. and Yousuf & Associates, Bangladesh	
<b>Position of the senior professional experts of your firm performed in the project:</b> Program Management Expert	
<b>Objectives of the Project:</b>  Bangladesh Health, Nutrition and Population Program (HNPS, 2005 to 2011) is a USD 4.2 billion Government led program that supports the implementation of the Ministry of Health and Family Welfare's (MOHFW) Strategic Investment Plan (SIP, 2003–2011). HNPS seeks to deliver the	

Health Sector's contribution to the Government's Poverty Reduction Strategy. Out of the total fund of 4.2 billion, USD 684 million is pooled funds, which comprises of World Bank credit of USD 300 million and trust fund of USD 384 million of seven development partners. Health Engineering Department (HED) of MOHFW and Public Works Department (PWD) undertake civil works in the health sector across the country. In every year the Government and Donors carry out an Annual Program Review (APR) of HNPSP. A key recommendation made during the APR of 2009 was to carry out a survey of the civil works constructed and/or upgraded to better understand the process – planning, implementation, contract management, utilization, maintenance, etc. Commitment Consultants, as a partner organization of IPE (India), was assigned to provide its management expert input on the planned components of the project.

**Detail Description of Actual Services Provided by CC's Experts and Staff:**

Commitment Consultants in association with IPE conducted a performance evaluation survey of the civil works in the health sector across the country, which were constructed by Health Engineering Department (HED) of MOHFW and Public Works Department (PWD). Under the annual Program Review (APR) of HNPSP, following performance was evaluated:

- Construction quality
- Planning, implementation, contract management, utilization, maintenance, etc.
- Enrollment of IPD and OPD and quality of services
- Commitment Consultants with its management expert contributed in the performance evaluation task for MOHFW

**DISASTER MANAGEMENT AND EMERGENCY RESPONSE, ENVIRONMENT**

**Project 28**

<b>Name of the Project: Capacity building to reduce lead contamination in Bangladesh</b>	
<b>Country:</b> Bangladesh <b>Name of the Assignment:</b> Capacity building to reduce lead contamination in Bangladesh  <b>Assignment Location:</b> Bangladesh	<b>Duration of assignment:</b> Four (4) Months <b>Status:</b> Ongoing
<b>Name of Client:</b> SEURECA, France	<b>Professional Experts/Staff provided by Your Organization:</b> No. of Expert: 02, No of Staff: 3, No of person-days: 3
<b>Start Date (Month/Year):</b> Dec, 2021	<b>Completion Date (Month/Year):</b> Mar, 2022
<b>Objectives of the Project:</b> <ul style="list-style-type: none"> <li>• A framework document at the beginning of the service;</li> <li>• A summary of the information relating to the environmental and social analysis contained in the</li> <li>• NEP, completed if necessary.</li> <li>• A provisional ESMP in French and English to be produced.</li> <li>• A modified ESMP, in French and English, taking into account the comments made on the Provisional ESMP, to be produced.</li> <li>• Organization of a meeting to present the results and proposals to the project stakeholders.</li> </ul>	

**Project 29**

<b>Name of the Project: Environmental and Social Management Plan (ESMP) for Capacity building to reduce Lead Contamination in Bangladesh</b>	
<b>Country:</b> Bangladesh <b>Name of the Assignment:</b> Environmental and	<b>Duration of assignment:</b> 11 Months <b>Status:</b> Completed

Social Management Plan (ESMP) for Capacity building to reduce Lead Contamination in Bangladesh <b>Assignment Location:</b> Bangladesh	
<b>Name of Client:</b> SEURECA	<b>Professional Experts/Staff provided by Your Organization:</b> No. of Expert: 02, No of Staff: 3
<b>Start Date (Month/Year):</b> Nov, 2022	<b>Completion Date (Month/Year):</b>
<b>Objectives of the Project:</b> <ul style="list-style-type: none"> <li>• A framework document at the beginning of the service;</li> <li>• A summary of the information relating to the environmental and social analysis contained in the NEP, completed if necessary.</li> <li>• A provisional ESMP in French and English to be produced.</li> <li>• A modified ESMP, in French and English, taking into account the comments made on the provisional ESMP, to be produced.</li> <li>• Organization of a meeting to present the results and proposals to the project stakehol</li> </ul>	
<b>Actual Work has been done on the field to develop the Environmental and Social Management Plan (ESMP):</b> <ul style="list-style-type: none"> <li>• Description of mitigation measures</li> <li>• Implementation of environmental and social monitoring</li> <li>• Organizational procedures</li> <li>• Implementation schedule and cost estimate</li> <li>• Definition of monitoring indicators</li> <li>• Long-term monitoring of remediated sites and the inventory of containment sites</li> <li>• Memory of landfills</li> </ul>	

### Project 30

<b>Name of the Project: Conducting End line Survey of ‘Community Driven Disability inclusive Disaster Risk Management and Climate Change Adaptation (CDDiDRM &amp; CCA) Project’</b>	
<b>Country:</b> Bangladesh <b>Name of the Assignment: Conducting End line Survey of ‘Community Driven Disability Inclusive Disaster Risk Management and Climate Change Adaptation (CDDiDRM &amp; CCA) Project</b>  <b>Assignment Location:</b> Bangladesh	<b>Duration of assignment:</b> Four (4) Months <b>Status:</b> Completed
<b>Name of Client:</b> Centre for Disability in Development (CDD).	<b>Professional Experts/Staff provided by Your Organization:</b> No. of Expert: 03, No of Staff: 6, No of person-days: 45
<b>Start Date (Month/Year):</b> Oct, 2022	<b>Completion Date (Month/Year):</b> Jan, 2023
<b>Objectives of the Project:</b> <ul style="list-style-type: none"> <li>• Attend project induction workshop with key team members</li> <li>• Organizing team and managing work processes</li> <li>• Desk review of information and prepare, submission of inception report</li> <li>• Review and feedback incorporation from CDD and CBM on inception report</li> <li>• Developing evaluation methodology and liaising with CDD and CBM BCO regarding meetings required to be organized</li> <li>• Develop Data collection tools for end line survey</li> <li>• Development of interview question guides, provide training, testing approaches, and quality control</li> <li>• Conduct a briefing and a debriefing meeting at start and end of field level conversation with stakeholders.</li> </ul>	

- Undertake end line survey team briefings and debriefings
- Supervise Field Visit and Data collection
- Managing collection, collation and confidentiality of collected data
- Prepare and submission of Draft report, story change with photos, Draft 2-page summary of report.
- Make changes and submits final report, story of changes with photos and 2-page summary of report in consultation with the client
- Present evaluation findings with CDD and CBM through meeting
- Ensuring deliverables are delivered by due dates
- Managing any conflicts of interest if arise

### Project 31

<b>Name of the Project: Situation Analysis of Joint Emergency Operations Centers in Cox's Bazar District, Bangladesh.</b>	
<b>Country:</b> Bangladesh <b>Name of the Assignment:</b> Situation Analysis of Joint Emergency Operations Centers.  <b>Assignment Location:</b> Cox's Bazar	<b>Duration of assignment:</b> Four (4) Months <b>Status:</b> Completed
<b>Name of Client:</b> EC & IMPACT	<b>Professional Experts/Staff provided by Your Organization:</b> No. of Expert: 04, No of Staff: 06, No of person-days: 48
<b>Start Date (Month/Year):</b> April 1, 2019	<b>Completion Date (Month/Year):</b> Aug, 2019
<b>Objectives of the Project:</b> To identify inter points for more effective ECHO support to the function of the adapted EOC for emergency preparedness and response.	
<b>Detail Description of Actual Services Provided by CC's Experts and Staff:</b> The main activities in the project included; Inception Workshop, Review Secondary Data, Identify Stakeholders, Physical Verification, Develop Questionnaire, Conduct KII and Workshop, Identify Different Resources, Organize Validation Workshop, Produce Final Report, Establish a Monitoring System.	

### Project 32

<b>Name of the Project: External Evaluation of "Emergency Response Program for Forcibly Displaced People from the Rakhain State of Myanmar."</b>	
<b>Country:</b> Bangladesh  <b>Name of the Assignment:</b> External Evaluation of "Emergency Response Program for Forcibly Displaced People from the Rakhain State of Myanmar."  <b>Assignment Location:</b> Cox's Bazar	<b>Duration of assignment:</b> Four (4) Months <b>Status:</b> Completed
<b>Name of Client:</b> Caritas Bangladesh	<b>Professional Experts/Staff provided by Your Organization:</b> No. of Expert: 04, No of Staff: 06, No of person-days: 48
<b>Start Date (Month/Year):</b> January 2019	<b>Completion Date (Month/Year):</b> June 2019
<b>Position of the senior professional experts of your firm performed in the project:</b> <ul style="list-style-type: none"> <li>• Lead Consultant</li> <li>• Study coordinator</li> </ul>	

<ul style="list-style-type: none"> <li>• Research Associate</li> <li>• Data Analyst</li> <li>• Enumerators</li> </ul>
<p><b>Objectives of the Project:</b></p> <ul style="list-style-type: none"> <li>• Assess the relevance, appropriateness, effectiveness, accountability and– impact/sustainability of the programme;</li> <li>• Assess the effectiveness of the leadership of Caritas Bangladesh in coordinating Caritas– Chittagong Regional Office and CI MOs for Emergency Response Program for Rohingya Crisis (Emergency Appeal 32/2017);</li> <li>• Identify lessons learned, best practices and recommendations to inform future programme design.</li> </ul>
<p><b>Detail Description of Actual Services Provided by CC’s Experts and Staff:</b></p> <p>The main activities in the project included; F2F Quantitative Survey, Consultation Meeting, Focus Group Discussion (FGD), Key Informant Interview (KII), Report Writing, Validation Workshop.</p>

**Project 33**

<b>Name of the Project: Implementing a Return Counselling Project</b>	
<p><b>Country:</b> Bangladesh  <b>Name of the Assignment:</b> Bangladesh Fact Sheet  <b>Assignment Location:</b> Bangladesh</p>	<p><b>Duration of assignment:</b> 04 (Four) months  <b>Status:</b> Completed</p>
<p><b>Name of Client:</b> Danish Refugee Council, Denmark</p>	<p><b>Professional Experts/Staff provided by Your Organization:</b>                  No of Expert: 01                  No of Staff: 01                  No of person-Months: 04</p>
<p><b>Start Date (Month/Year):</b> September 2014</p>	<p><b>Completion Date (Month/Year):</b> December 2014</p>
<p><b>Position of the senior professional experts of your firm performed in the project:</b>                  Documentation Expert</p>	
<p><b>Objectives of the Project:</b></p> <p>The Danish Refugee Council (DRC) is implementing a return counselling project financed by the Danish Immigration Service. DRC provides return and reintegration counselling to rejected asylum seekers in Denmark and through local partners in the country of return. The purpose of the counselling in Denmark is to focus on the needs of the returnee in preparation of the return and in the reintegration phase, and through information from local counsellors in the country of origin, it is possible for the returnee to learn about practical issues relevant for the individual return, for example how to register children born in Denmark, access to housing in a specific village, establishment of contact to relatives, learn whether there are reintegration projects in the area of return, etc.</p>	
<p><b>Detail Description of Actual Services Provided by CC’s Experts and Staff:</b></p> <p>Commitment Consultants developed of Bangladesh country fact Sheet. The purpose of this assignment is to provide potential information to the returnees with objective information of relevance to their decision to return. If the returnee needs more detailed, specific information, this will be available through individual counseling with local partners or local DRC staff in the country of origin</p>	

**RECYCLING MANAGEMENT**

**Project 34**

<b>Name of the Project: “Service Provider to Conduct a Study on Plastic Recycling in Dhaka”</b>	
<b>Country:</b> Bangladesh  <b>Name of the Assignment:</b> Conduct a study on “Service Provider (to Conduct a Study) on Plastic Recycling in Dhaka” plastic Recycling <b>Assignment Location:</b> Dhaka	<b>Duration of assignment:</b> 04 months <b>Status:</b> Completed
<b>Name of Client:</b> Swiss contact	<b>Professional Experts/Staff provided by Your Organization:</b> No. of Expert: 04 No of Staff: 04 No of Person-Months: 3
<b>Start Date (Month/Year):</b> December 2015	<b>Completion Date (Month/Year):</b> March 2016
<b>Name of the associated Consultants, if any:</b> Commitment Consultants	
<b>Position of the senior professional experts of your firm performed in the project:</b> <ul style="list-style-type: none"> <li>• Team Leader</li> <li>• Management Expert (Community Waste Management)</li> <li>• Market Analyst (Plastic waste recycling enterprises)</li> <li>• Research Associate</li> </ul>	
<b>Objectives of the Project:</b> The overall objective of this study is to develop a good understanding of the plastic recycling sector in Dhaka, i.e. to elucidate what types of plastic are recycled in Dhaka, which recycling processes are used, and what raw materials/new products result from these recycling processes. Specific Objectives are: The technical name of the plastic materials; The processing steps through which the plastic material is recycled; A detailed list of other items of the same plastic material fed into the same recycling process; The raw materials/new products which constitute the end point of the recycling process in Dhaka; Information on the profitability of the recycling process (cost of recyclables, processing cost, selling price of recycled raw material/products)	
<b>Expected Outputs:</b> Capture the scenario of plastic wastes recycling in Dhaka. Types of recyclable plastic items; <ul style="list-style-type: none"> <li>• 30 sample plastic items retrieved by waste collectors and sold to recyclable traders as a starting point; The technical name of the plastic material; The processing steps through which the plastic material is recycled; A detailed list of other items of the same plastic material fed into the same recycling process; The raw materials/new products which constitute the end point of the recycling process in Dhaka; Profitability of the recycling process (cost of recyclables, processing cost, selling price of recycled raw material/products).</li> </ul>	
<b>Detail Description of Actual Services Provided by CC’s Experts and Staff:</b> <ul style="list-style-type: none"> <li>• Designing the study (survey instrument preparation &amp; piloting)</li> <li>• Conduct Quality &amp; Quantitative survey, Key Informant Interviews</li> <li>• Designing the data analysis frame work</li> <li>• Visit various production line and discuss with technical persons, whole sellers and midlevel traders</li> <li>• Capture photos in various level of activities</li> </ul>	

**POWER/ENERGY, WASTE TO ENERGY**

**Project 35**

<b>Name of the Project: GRANT-9194 BAN: Rupsha 800-Megawatt Combined Cycle Power Plant Project - C-4 Supporting Socially Inclusive Development for Better Livelihood Through Rupsha Power Plant Project (50161-003), funded by Asian Development Bank (ADB)</b>	
<b>Country:</b> Bangladesh <b>Name of the Assignment:</b> GRANT-9194 BAN:	<b>Duration of assignment:</b> 31 Months

<p>Rupsha 800-Megawatt Combined Cycle Power Plant Project - C-4 Supporting Socially Inclusive Development for Better Livelihood Through Rupsha Power Plant Project (50161-003),</p> <p>Funded by: Asian Development Bank (ADB)</p> <p><b>Location:</b> Khalishpur, Khulna</p>	
<p><b>Name of Client:</b> North-West Power Generation Company Limited (NWPGL), Bangladesh</p>	<p><b>Professional Experts/Staff provided by Your Organization:</b> No. of Expert: 08, No of person-Months: 45</p>
<p><b>Start Date (Month/Year):</b> August 2019</p>	<p><b>Completion Date (Month/Year):</b> May, 2023</p>
<p><b>Name of the associated Consultants, if any:</b> Practical Action, Bangladesh (Lead firm)</p>	
<p><b>Objectives of the Project:</b></p> <ol style="list-style-type: none"> <li>1. The key objective of the assignment is to implement the planned activities under the JFPR grant in line with international best practices as described in grant report and provide required deliverables.</li> <li>2. The assignment is expected to commence in the second quarter of 2019 and will continue until the fourth quarter of 2021.</li> </ol>	
<p><b>Detail Description of Actual Services will be provided by CC's Experts and Staff:</b> The main activities in the project included;</p> <ul style="list-style-type: none"> <li>• Support procurement of the 10kW solar system, IT and science laboratories and inclusive educational facilities (as per the Grant Report); and monitor the installation of facilities and equipment</li> <li>• Conduct needs assessment for school buses and other educational materials (as per the Grant Report), and support and monitor procurement of them, if applicable</li> <li>• Develop a training program with materials, and facilitate training on: (a) safe and efficient use of electricity, (b) how to use IT and science labs, (c) how to utilize IT technology to improve education and information access and conduct an evaluation survey after each training</li> <li>• Undertake needs assessment for determining the most appropriate trainings for livelihood activities and employment opportunities for households in the project affected area; develop a training program with materials; prepare selection criteria for the trainees and mobilize community members with selecting trainees based on the criteria</li> <li>• Provide trainings for the trainees selected (a) to promote energy-based livelihoods through access to electrical appliances; (b) to increase employment opportunities for technical and administrative work; and conduct evaluation surveys after each training</li> <li>• Develop a workshop program with materials for improving social and gender awareness workshops for NWPGL and facilitate workshops (with at least 50 staff) at its headquarters and regional hubs; and conduct evaluation surveys after each workshop</li> <li>• Develop materials and programs and conduct the school outreach event series to encourage male and female students to consider a career in the energy sector</li> <li>• Develop socially inclusive community development strategy for NWPGL</li> <li>• Implement the project communication strategy, supporting information dissemination and consultations; preparing FAQs for the project and grant; updating the Rupsha 800MW CCPP project section in social media of NWPGL, if any; preparing fact sheets for information sharing; and supporting the PMU and project team with activities conducted under the JFPR grant</li> </ul>	

**Project 36**

<p><b>Name of the Project: Biogas Generation and Demand Survey in Bangladesh</b></p>	
<p><b>Country:</b> Bangladesh</p> <p><b>Name of the Assignment:</b> Biogas Generation and Demand Survey</p>	<p><b>Duration of assignment:</b> 04 (Four) months</p> <p><b>Status:</b> Completed</p>

<b>Assignment Location:</b> Bangladesh	
<b>Name of Client:</b> Japan International Cooperation Agency (JICA)	<b>Professional Experts/Staff provided by Your Organization:</b> No of Expert: 02 No of Staff: 02 No of person-Months: 5
<b>Start Date (Month/Year):</b> December 2014	<b>Completion Date (Month/Year):</b> March 2015
<b>Name of the associated Consultants, if any:</b> E.Gen Consultants ltd. and Commitment Consultants.	
<b>Position of the senior professional experts of your firm performed in the project:</b>	
<ul style="list-style-type: none"> <li>• Quality Improvement Advisor and</li> <li>• Statistician and Econometric Expert</li> </ul>	
<b>Objectives of the Project:</b>	
<p>JICA funded a project, focused the research on a) Biogas potential market research b) Biogas potential manufacturing research c) Biogas potential supply chain research and d) Risks/issues identification for implementation.</p> <p>Access to efficient and modern energy is extremely crucial for the developing nations to counter the economic and health issues and at the same time with the productive use of energy increase the economic growth and life standard of the deprived people. A well performing energy system can provide these people with income generating opportunities as well as to escape them from the awful impacts of poverty. Biogas is one of the best solutions for proven and widely used source of energy around the globe. There is not yet another wave of renewed interest in bio gas due to the increasing concern of climate change, indoor air pollution and increasing oil prices etc. Promotions of Biogas open opportunities to mitigate such concerns. Commitment Consultants successfully engaged with the Biogas Potential Market Research Biogas Potential Manufacture Research Biogas Potential Supply Chain Research Risk/Issues Identified for Implementation and Different methods were used for quantities and qualitative data collection, FGD, KII. The sample size was 1600 respondents.</p>	
<b>Detail Description of Actual Services Provided by CC's Experts and Staff:</b>	
<p>JICA engaged E.Gen and Commitment Consultants to conduct a countrywide survey on 'Biogas Generation and Demand'. It was successfully done to assess Biogas Potential Market Research, Biogas Potential Manufacture Research, Biogas Potential Supply Chain and Research Risk/Issues Identified for Implementation.</p> <ul style="list-style-type: none"> <li>• Different methods were used for quantities and qualitative data collection, FGD, KII.</li> <li>• The sample size was 1600 respondents.</li> <li>• The respondents included, biogas manufacturers, users, other beneficiaries, related government counterparts, etc.</li> </ul>	

### Project 37

<b>Name of the Project: Waste to Bio-Gas project at Gaibandha.</b>	
<b>Country:</b> Bangladesh	<b>Duration of assignment:</b> 15months <b>Status:</b> Completed
<b>Name of the assignment:</b> Waste to Bio-Gas project at Gaibandha Municipality.	
<b>Name of Client:</b> UNICEF	<b>Professional Experts/Staff provided by Your Organization:</b> No. of Expert: 01 No. of officer: 02 No of Staff: 06 No of Person-Months:15 months
<b>Start Date (Month/Year):</b> 2012	<b>Completion Date (Month/Year):</b> 2013
<b>Name of the partner:</b> Practical Action Bangladesh	

<ul style="list-style-type: none"> <li>• <b>Position of the senior professional experts and officers of your firm performed in the project:</b></li> <li>• Waste Management Expert</li> <li>• Project Implementation Officer</li> <li>• Project Engineer</li> </ul>
<ul style="list-style-type: none"> <li>• <b>Objectives of the Project:</b></li> <li>• Build partnership with Municipality</li> <li>• Develop community-based approach on solid waste management</li> <li>• Establish HH waste collection and management</li> <li>• Install Bio-gas plant utilizing HH waste</li> <li>• Involve neighborhood community to use biogas as cooking fuel.</li> </ul>
<p><b>Detail Description of Actual Services Provided by CC's Experts/Staff:</b></p> <p>Commitment” implemented a W2B project in partnership with Practical Action Bangladesh. Project initiated a HH waste collection in number of wards. It has also installed a one ton capacity bio gas plant, utilizing municipal organic waste. It involved Gaibandha Municipal authority in the process and made a successful PPP model. The project could make the community motivated, created demand for biogas and gave gas connection to 20 – 25 adjacent HH of the plant for cooking purpose. Commitment took the main role of involving community in the wards, launched various awareness programme. Plant has also been producing compost from biogas plant.</p>

**AGRICULTURE, LIVELIHOODS, WOMEN & GENDER AND LAW**

**Project 38**

<b>Name of the Project: “Making Market Work for Women (MMWW)”</b>	
<p><b>Country:</b> Bangladesh</p> <p><b>Name of the Assignment:</b> Baseline on Making Market Work for Women (MMWW)</p> <p><b>Assignment Location:</b> Faridpur, Patuakhali, Bogra and Gaibandha</p>	<p><b>Duration of assignment:</b> 07 months</p> <p><b>Status:</b> Completed</p>
<p><b>Name of Client:</b> ActionAid Bangladesh</p>	<p><b>Professional Experts/Staff provided by Your Organization:</b></p> <p>No. of Expert: 03</p> <p>No of Field Staff: 20</p> <p>No. of management staffs: 02</p> <p>No of Person months: 3</p>
<p><b>Start Date (Month/Year):</b> August 2016</p>	<p><b>Completion Date (Month/Year):</b> February 2017</p>
<p><b>Position of the senior professional experts of your firm performed in the project:</b></p> <ul style="list-style-type: none"> <li>• Team Leader cum value chain expert</li> <li>• SRHR Expert</li> <li>• Nutrition Expert</li> <li>• Statistician</li> </ul>	
<p><b>Objectives of the Project:</b></p> <p>The overall objective of this study is to:</p> <ul style="list-style-type: none"> <li>• To improve sexual and reproductive health rights and nutrition situation of women, their families and the wider community</li> <li>• To bring sustainable and systemic changes in existing market behaviors that will enable women to perform in the agri-value chain.</li> <li>• <b>Specific objective of the task are as follows:</b></li> <li>• Provide detailed contextual information / situational analysis on attitudes, knowledge and behavior of key stakeholders regarding SRHR, Nutrition, Food security;</li> </ul>	

<ul style="list-style-type: none"> <li>Analyze the situation of different agri-entrepreneurs especially women involved in different value chain products, their market accessibility including identification of key market actors and suitable interventions;</li> <li>Gather relevant baseline data for key project indicators to enable changes over target people and other stakeholders;</li> <li>Develop recommendations for on-going project monitoring, learning and final impact assessment of the project</li> </ul>
<p><b>Detail Description of Actual Services Provided by CC's experts and Staffs:</b></p> <ul style="list-style-type: none"> <li>Document review</li> <li>Study design</li> <li>Analytical framework</li> <li>Sampling for data collection</li> <li>Sample distribution: Demographic and Socio-economic Information, Nutrition, Sexual and Reproductive Health (SRH), Production, Productivity and Agro-entrepreneurship.</li> <li>Data collection (semi-structured question, FGD and KII)</li> <li>Develop draft report</li> <li>Submission of final report</li> </ul>

**Project 39**

<p><b>Name of the Project: "Climate Resilient Agriculture: transforming the livelihoods of poor women, men and children in marginalized rural areas of Bangladesh"</b></p>	
<p><b>Country:</b> Bangladesh</p> <p><b>Name of the Assignment:</b> Baseline Survey of the project on "Climate Resilient Agriculture: transforming the livelihoods of poor women, men and children in marginalized rural areas of Bangladesh"</p> <p><b>Assignment Location:</b> Sunamganj, Rajshahi, Dinajpur, Khulna and Jessore.</p>	<p><b>Duration of assignment:</b> 03 months</p> <p><b>Status:</b> Completed</p>
<p><b>Name of Client:</b> CAFOD UK.</p>	<p><b>Professional Experts/Staff provided by Your Organization:</b></p> <p>No. of Expert: 05 No of Staff: 4 No of person-Months: 03</p>
<p><b>Start Date (Month/Year):</b> November 2015</p>	<p><b>Completion Date (Month/Year):</b> January 2016</p>
<p><b>Name of the associated Consultants, if any:</b> Commitment Consultants</p>	
<p><b>Position of the senior professional experts of your firm performed in the project:</b></p> <ul style="list-style-type: none"> <li>Team Leader</li> <li>Statistician and Econometric Expert</li> <li>Agro Economist</li> <li>Data Analyst</li> <li>Research Associate</li> </ul>	
<p><b>Objectives of the Project:</b></p> <p>To support the 'Climate Resilient Agriculture' project, this consultancy will focus on a baseline study for collecting information on the actual situation in the community locations and information related to the challenges in terms of multiple variables.</p> <ul style="list-style-type: none"> <li>Base measurement of the key indicators of the project;</li> <li>Develop measurable benchmarks on the overall goal of the project to measure changes;</li> <li>Suggest simple monitoring tools in line with log frame for measuring progresses towards the achievements of project's goals and objectives.</li> </ul>	
<p><b>Detail Description of Actual Services Provided by CC's Experts and Staff:</b></p> <ul style="list-style-type: none"> <li>Literature review and secondary data collection</li> <li>Designing the study (survey instrument preparation &amp; piloting)</li> </ul>	

- Quality and quantitative survey
- FGDs and key informant Interviews
- Ensuring quality assurance of the entire survey process including coding, data cleaning and analysis Designing the data analysis frame work
- Workshop/stakeholder meeting
- Submission of Final report

### Project 40

<b>Name of the Project: “Value chain assessments to identify potential markets, consumer preferences, and market trends for agricultural commodities in Khulna district (Dacope and Koyra Upazila)”</b>	
<p><b>Country:</b> Bangladesh</p> <p><b>Name of the Assignment:</b> “Value chain assessments to identify potential markets, consumer preferences, and market trends for agricultural commodities in Khulna district (Dacope and Koyra Upazila)”</p> <p><b>Location: Koyra and Dacope,</b> Khulna, Bagerhat.</p>	<p><b>Duration of assignment:</b> 02 months</p> <p><b>Status:</b> Continued</p>
<p><b>Name of Client:</b> JJS and Concern worldwide</p>	<p><b>Professional Experts/Staff provided by Your Organization:</b> No. of Expert: 02 No of Staff:6 No of person-Months: 02</p>
<p><b>Start Date (Month/Year):</b> September, 2024</p>	<p><b>Completion Date (Month/Year):</b> October, 2024</p>
<b>Name of the associated Consultants, if any:</b> Commitment Consultants	
<b>Position of the senior professional experts of your firm performed in the project:</b>	
<ul style="list-style-type: none"> <li>• Team Leader (Agro Expert)</li> <li>• Associate Consultant</li> <li>• Statistician</li> <li>• Supervisor</li> <li>• Research Assistant</li> </ul>	
<b>Objectives of the Project:</b>	
<p>The main purpose is to value chain selection and analysis to identify potential markets, consumer preferences, and market trends for agricultural commodities for the Dacope and Koyra Upazila of Khulna district.</p>	
<b>Detail Description of Actual Services Provided by CC’s Experts and Staff:</b>	
<ul style="list-style-type: none"> <li>- Analyze all potential value chains in the region and select three for comprehensive analysis based on the following criteria.</li> <li>- Conduct a detailed analysis of the selected value chains to gain a comprehensive understanding and develop strategies/interventions to strengthen them, creating opportunities for sustainable livelihoods</li> </ul>	

### Project 41

**Name of the Project: An assessment to find the gaps in legal assistance in the host community in Cox’s Bazar, Bangladesh**

<p><b>Country:</b> Bangladesh  <b>Name of the Assignment</b> An assessment to find the gaps in legal assistance in the host community in Cox's Bazar, Bangladesh  <b>Assignment Location:</b> Cox's bazar</p>	<p><b>Duration of assignment:</b> 2.5 months</p>
<p><b>Name of Client:</b> International Rescue Committee (IRC)</p>	<p><b>Professional Experts/Staff provided by Your Organization:</b>                  No. of Expert: 04                  No of Staff and field force: 15                  No of person-Months: 2.5</p>
<p><b>Start Date (Month/Year):</b> June, 2023</p>	<p><b>Completion Date (Month/Year):</b> August, 2023</p>
<p><b>Name of the associated Consultants, if any:</b> Commitment Consultants</p>	
<p><b>Objectives of the Project:</b></p> <ul style="list-style-type: none"> <li>To establish the most common justice mechanisms (formal and informal) in the host community</li> <li>To identify gaps in legal assistance (legal information, counselling, assistance, representation, and system strengthening) in the host community</li> <li>To develop specific recommendations to inform legal assistance programming to promote access to justice in the host community.</li> </ul>	
<p><b>Detail Description of Actual Services Provided by CC's Experts and Staff:</b></p> <ul style="list-style-type: none"> <li>Literature review and secondary data collection</li> <li>Training to the field team</li> <li>Designing the study (survey instrument preparation &amp; piloting)</li> <li>Smartphone Based Personal Interview</li> <li>FGDs, key informant Interviews (KII) and IDI with people related to the legal issues</li> <li>Ensuring quality assurance of the entire survey process including coding, data cleaning and analysis Designing the data analysis frame work</li> <li>Submission of draft final report to IRC for their feedback/comments</li> <li>Submission of Final report</li> </ul>	

**Project 42**

<p><b>Name of the Project:</b> Research on waste pickers' livelihoods, vulnerabilities and means to overcome existing condition.</p>	
<p><b>Country:</b> Bangladesh  <b>Name of the Assignment:</b> Research and training of water, sanitation, and waste management  <b>Assignment Location:</b> Dhaka, Bangladesh</p>	<p><b>Duration of assignment:</b> 13 (Thirteen) months  <b>Status:</b> Completed</p>
<p><b>Name of Client:</b> International Training Network (ITN), BUET</p>	<p><b>Professional Experts/Staff provided by Your Organization:</b>                  No of Expert: 02                  No of Staff: 06                  No of person-Months: 13</p>
<p><b>Start Date (Month/Year) :</b> November, 2008</p>	<p><b>Completion Date (Month/Year):</b> November, 2009</p>
<p><b>Position of the senior professional experts of your firm performed in the project:</b></p> <ul style="list-style-type: none"> <li>Principal Researcher</li> <li>Associate Researcher</li> </ul>	
<p><b>Objectives of the Project:</b>                  The ITN Centre at BUET has been conducting research and training on water, sanitation, and waste management for over 10 years. It has supported a number of researches on neglected areas</p>	

of the sector. As part of this effort, ITN awarded a contract to Commitment Consultants to conduct a study on the livelihoods of waste pickers in Dhaka city. CC with a number of field researchers conducted the study.

**Detail Description of Actual Services Provided by CC's Experts and Staff:**

It was good opportunity to develop comprehensive research to investigate the livelihoods and vulnerabilities of waste pickers in Dhaka city. Commitment Consultants successfully engaged with the waste pickers and elicited information on their livelihood patterns, socio-economic condition, water-sanitation-hygiene situation, and risks and vulnerabilities. Different methods were used for data collection. The sample size was 500 respondents. The findings were disseminated in a national workshop organized by ITN and Commitment Consultants. Subsequently it was presented at many academic institutions.

**Project 43**

<b>Name of the Project: "Day Care Centers"</b>	
<b>Country:</b> Bangladesh	<b>Duration of assignment:</b> 03(Three) months <b>Status:</b> Completed
<b>Name of the Assignment:</b> "Study Visit and Documentation prepared on Day Care Center"	
<b>Assignment Location:</b> Dhaka	
<b>Name of Client:</b> Caritas Dhaka Region	<b>Professional Experts/Staff provided by Your Organization:</b> No of Expert: 01 No of Staff: 03 No of person-Months: 3
<b>Start Date(Month/Year) :</b> January,2012	<b>Completion Date(Month/Year):</b> March 2012
<b>Position of the senior professional experts of your firm performed in the project:</b> Project Coordinator	
<b>Objectives of the Project:</b> The project served two purposes in the broad head a) Learn about the approach and methodologies for implementation for Day Care Centers (DCC) and; b) Find out/identify the best approach of operating DCCs from the sustainability point of view. A detail survey was conducted to the existing DCC in Dhaka City. The expert team visited a number of DCCs of different categories (Government and Private).	
<b>Detail Description of Actual Services Provided by CC's Experts and Staff:</b>  Commitment Consultants provided the technical and supervisory support in this assignment and engaged Reputed consultants to carry out the task.	

**TOURISM and ARCHEOLOGY**

**Project 44**

<b>Name of the Project: South Asia Tourism Infrastructure Development Project- SATIDP (Bangladesh Portion) under ADB loan no: 2580-BAN</b>	
<b>Country:</b> Bangladesh	<b>Duration of assignment:</b> 42 (forty-two) months <b>Status:</b> Completed
<b>Name of the Assignment:</b> Project Management, Design and Supervision Consultancy (PMDSC) for South Asia Tourism Infrastructure Development Project- SATIDP (Bangladesh Portion), under ADB loan no: 2580-BAN	
<b>Assignment Location:</b> <b>Archaeological Site:</b>	

<ul style="list-style-type: none"> <li>• Paharpur Vihara: District Naogaon</li> <li>• Mahasthangarh: District Bogra</li> <li>• Kantajew Temple: District Dinajpur</li> <li>• 60 Dom Mosque, Bagerhat: District Bagerhat</li> </ul>	
<p><b>Name of Client:</b> Department of Archaeology, The Government of the People's Republic of Bangladesh Ministry of Cultural Affair. and Asian Development Bank (ADB)</p>	<p><b>Professional Experts/Staff provided by Your Organization:</b>                  No. of Expert: 06                  No of Staff: 04                  No of person-Months: 94</p>
<p><b>Start Date (Month/Year):</b> February 2013</p>	<p><b>Completion Date (Month/Year):</b> July 2016</p>
<p><b>Name of the associated Consultants, if any:</b> IPE Global (Pvt.) Ltd. India; Commitment Consultants, Bangladesh; Consultancy for Conservation and Development Ltd. UK; and ANZDEC Ltd., New Zealand.</p>	
<p><b>Objectives of the Project:</b>                  This project focuses on providing consulting services to assist the Project Management, Design and Supervision Consultancy (PMDSC) to implement the Investment Program in the district of Naogaon, Bogra, Dinajpur and Bagerhat to be covered under the Infrastructure Development Investment Program for Tourism.</p>	
<p><b>Detail Description of Actual Services Provided by CC's Experts/Staff:</b></p> <ul style="list-style-type: none"> <li>• Assist the Project Management and Implementation Unit (PMIU), based within the Department of Archaeology, Ministry of Cultural Affairs, GOB</li> <li>• Developed detailed design, supervision, monitoring of the project including the capacity development activities</li> <li>• Ensured that community tourism specialist and the marketing &amp; promotion specialist work in close collaboration with Bangladesh Parjatan Corporation (BPC) and DOA under the guidance of the project management specialist</li> <li>• <b>PMDC</b> team worked in close liaison with the PMU and executed the following tasks:                     <ol style="list-style-type: none"> <li><b>1. Preparation of Master Plan and Management Plan:</b> All specialists contributed to the preparation of the Master Plan and Management Plan for each heritage site of the project. Established operating procedures for the 04 sites management.</li> <li><b>2. Detailed Design:</b> The consultants finalized all additional subproject elements (which were not included by the preparatory consultants but critically important for the site/project).</li> <li><b>3. Contract Packages:</b> Based on the detailed engineering design, the consultants prepared all necessary tender drawings, specification, bill of quantities, detailed cost estimates, implementation schedule, quality control programs and contract packages considering ADB requirements and ease of implementation. The specifications has been used detailed in Bangladesh /international standards.</li> <li><b>4. Bidding Documents:</b> The consultants prepared necessary documentation using ADB's updated format required for competitive bidding, shopping, etc. which included instruction to bidders, employer's requirements, general and special conditions of contract, technical specifications, BOQ, tender drawings, forms of contract etc. Consultants assisted PMU in bid evaluation, award of contract and contract signing etc.</li> <li><b>5. Construction Supervision and Contract Monitoring:</b> The consultants, as the engineer's representative under the contract, supervised construction of all the project components; monitored construction methods and quality control; certified that the quality of works conforms to the specifications and drawings; assessed the adequacy of the contractor's input materials, labour, equipment, and construction methods; resolution of contractual issues, furnished all revisions and detailed drawings as necessary during the continuance of the contract; attended third party inspections as necessary; examine the contractor's claims for variations/extension, additional compensation, etc., and prepared recommendation for approval by PMIU; assisted in preparing planned maintenance procedures; assisted and checked installation and commissioning. Record the work measurement, certify the contractor's claim and assisted PMIU in contract monitoring and in preparation of the "as built" drawings.</li> <li><b>6. Supervision during Implementation:</b> The supervision services included engineer's supervision and management of civil works</li> </ol> </li> </ul> <p>Following are the broad activities were taken up: (1) Contract administration and management; (2) Scrutinize the contractor's detailed work program; (3) Scrutinize construction methods proposed by contractor including environmental, safety, personnel and public issues. Quality assurance system</p>	

including verification of material quality and certification; (4) Monitor resource mobilization and progress of work and contractors' adherence to the work plan. Take necessary action to expedite progress for meeting the timeline; (5) Measurement of quantities and certification & Certify at completion, 'built as per drawings'; (6) Carryout supervision of all the works including periodical inspection of Contractor's machinery and equipment; (7) Inspect the works at appropriate intervals during defect liability period and Take necessary action as per the clauses of certification; (8) Prepare construction supervision manual, maintenance manual, monthly and quarterly progress reports; (9) Assist PMIU in computer aided monitoring of progress / implementation, project management and M.I.S. of project.